

EZH1 Rabbit pAb

货号: **AYP18547**

产品信息

反应	Human,Mouse,Rat
宿主	Rabbit
克隆性	Polyclonal
预测反应	
应用	WB IF/ICC
推荐浓度	WB: 1:200 - 1:2000 IF/ICC: 1:50 - 1:200
理论分子量	68kDa/76kDa/80kDa/85kDa/86kDa
实测分子量	100kDa
形式	Liquid
保存条件	Store at -20°C. Avoid freeze / thaw cycles. Buffer: PBS with 0.01% thiomersal,50% glycerol,pH7.3.
偶联物	Unconjugated
阳性对照	RAW264.7
细胞定位	Nucleus
纯化	Affinity purification

抗原信息

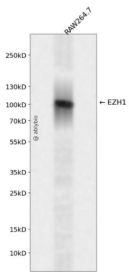
抗原信息	Recombinant fusion protein containing a sequence corresponding to amino acids 160-270 of EZH1 (NP_001982.2).
序列	GEEEMIPGSVLISDAVFLLELVDALNQYSDEEEEGHNDTSDGKQDDSKEDLPVTRKRKRHAIEGNKKSSKKQFPNDMIFSAI ASMPENGVPDDMKERYRELTEMSDPNALP

靶点信息

研究背景	EZH1 is a component of a noncanonical Polycomb repressive complex-2 (PRC2) that mediates methylation of histone H3 (see MIM 602812) lys27 (H3K27) and functions in the maintenance of embryonic stem cell pluripotency and plasticity (Shen et al., 2008 [PubMed 19026780]).[supplied by OMIM, Mar 2009]
基因ID	2145

基因名	EZH1
Swiss	Q92800
别名	EZH1;KMT6B

产品验证



Western blot analysis of EZH1 expressed in RAW264.7 using EZH1 Rabbit pAb at 1:1000. Secondary antibody: HRP Goat Anti-Rabbit IgG (H+L) at 1:5000. Lysates/proteins: 30ug per lane. Blocking buffer: 5% non-fat dry milk in TBST. Detection: ECL Enhanced Kit. Exposure time: 120s.

实验步骤

访问官网浏览详情: www.ablybio.cn