

CRYBA4 Rabbit pAb

货号: **AYP18545**

产品信息

反应	Human
宿主	Rabbit
克隆性	Polyclonal
预测反应	
应用	WB
推荐浓度	WB: 1:200 - 1:2000
理论分子量	22kDa
实测分子量	22kDa
形式	Liquid
保存条件	Store at -20°C. Avoid freeze / thaw cycles. Buffer: PBS with 0.01% thiomersal,50% glycerol,pH7.3.
偶联物	Unconjugated
阳性对照	293T,HeLa
细胞定位	
纯化	Affinity purification

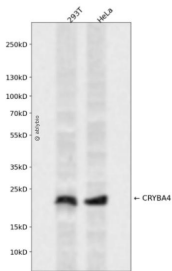
抗原信息

抗原信息	Recombinant fusion protein containing a sequence corresponding to amino acids 1-196 of human CRYBA4 (NP_001877.1).
序列	MTLQCTKSAGPWKMVVWDEDGFQGRRHEFTAECPSVLELGFETVRSCLKVLSGAWVGFEGHAGFQGQYILERGEYPSW DAWGGNTAYPAERLTSFRPAACANHRDSRLTIFEQENFLGKKGELSDDYPSLQAMGWEGNEVGSFHVHSGAWVCSQF PGYRGFYVLECDHHS GDYKHFREWGSHAPTFVQVQSIRRIQQ

靶点信息

研究背景	Crystallins are separated into two classes: taxon-specific, or enzyme, and ubiquitous. The latter class constitutes the major proteins of vertebrate eye lens and maintains the transparency and refractive index of the lens. Since lens central fiber cells lose their nuclei during development, these crystallins are made and then retained throughout life, making them extremely stable proteins. Mammalian lens crystallins are divided into alpha, beta, and gamma families; beta and gamma crystallins are also considered as a superfamily. Alpha and beta families are further divided into acidic and basic groups. Seven protein regions exist in crystallins: four homologous motifs, a connecting peptide, and N- and C-terminal extensions. Beta-crystallins, the most heterogeneous, differ by the presence of the C-terminal extension (present in the basic group, none in the acidic group). Beta-crystallins form aggregates of different sizes and are able to self-associate to form dimers or to form heterodimers with other beta-crystallins. This gene, a beta acidic group member, is part of a gene cluster with beta-B1, beta-B2, and beta-B3.
基因ID	1413
基因名	CRYBA4
Swiss	P53673
别名	CRYBA4;CTRCT23;CYRBA4;MCOPCT4

产品验证



Western blot analysis of CRYBA4 expressed in 293T, HeLa using CRYBA4 Rabbit pAb at 1:1000. Secondary antibody: HRP Goat Anti-Rabbit IgG (H+L) at 1:5000. Lysates/proteins: 30ug per lane. Blocking buffer: 5% non-fat dry milk in TBST. Detection: ECL Enhanced Kit. Exposure time: 120s.

实验步骤

访问官网浏览详情: www.ablybio.cn