

LAMA4 Rabbit pAb

货号: **AYP18536**

产品信息

| | |
|-------|--|
| 反应 | Human |
| 宿主 | Rabbit |
| 克隆性 | Polyclonal |
| 预测反应 | |
| 应用 | WB |
| 推荐浓度 | WB: 1:200 - 1:2000 |
| 理论分子量 | 12kDa/201kDa/202kDa |
| 实测分子量 | 203kDa |
| 形式 | Liquid |
| 保存条件 | Store at -20°C. Avoid freeze / thaw cycles. Buffer: PBS with 0.01% thiomersal, 50% glycerol, pH7.3. |
| 偶联物 | Unconjugated |
| 阳性对照 | 293T |
| 细胞定位 | Secreted, basement membrane, extracellular matrix, extracellular space |
| 纯化 | Affinity purification |

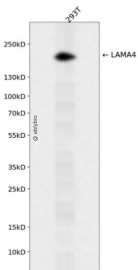
抗原信息

| | |
|------|--|
| 抗原信息 | A synthetic peptide corresponding to a sequence within amino acids 1-100 of human LAMA4 (NP_001098 678.1). |
| 序列 | MALSSAWRSVLPLWLLWSAACSRASGDDNAFPFDIEGSSAVGRQDPPETSEPRVALGRLPPAAEVQCPCHCHPAGAPA PPRAVPHSSFSLSPPLSSPQC |

靶点信息

| | |
|-------|--|
| 研究背景 | Laminins, a family of extracellular matrix glycoproteins, are the major noncollagenous constituent of basement membranes. They have been implicated in a wide variety of biological processes including cell adhesion, differentiation, migration, signaling, neurite outgrowth and metastasis. Laminins are composed of 3 non identical chains: laminin alpha, beta and gamma (formerly A, B1, and B2, respectively) and they form a cruciform structure consisting of 3 short arms, each formed by a different chain, and a long arm composed of all 3 chains. Each laminin chain is a multidomain protein encoded by a distinct gene. Several isoforms of each chain have been described. Different alpha, beta and gamma chain isomers combine to give rise to different heterotrimeric laminin isoforms which are designated by Arabic numerals in the order of their discovery, i.e. alpha1beta1gamma1 heterotrimer is laminin 1. This gene encodes the alpha chain isoform laminin, alpha 4. The domain structure of alpha 4 is similar to that of alpha 3, both of which resemble truncated versions of alpha 1 and alpha 2, in that approximately 1,200 residues at the N-terminus (domains IV, V and VI) have been lost. Laminin, alpha 4 contains the C-terminal G domain which distinguishes all alpha chains from the beta and gamma chains. The RNA analysis from adult and fetal tissues revealed developmental regulation of expression, Tissue-specific utilization of alternative polyA-signal has been described in literature. |
| 基因ID | 3910 |
| 基因名 | LAMA4 |
| Swiss | Q16363 |
| 别名 | LAMA4;CMD1JJ;LAMA3;LAMA4*-1 |

产品验证



Western blot analysis of LAMA4 expressed in 293T using LAMA4 Rabbit pAb at 1:1000. Secondary antibody: HRP Goat Anti-Rabbit IgG (H+L) at 1:5000. Lysates/proteins: 30ug per lane. Blocking buffer: 5% non-fat dry milk in TBST. Detection: ECL Enhanced Kit. Exposure time: 120s.

实验步骤

访问官网浏览详情: www.ablybio.cn