

PLS1 Rabbit pAb

货号: **AYP18527**

产品信息

反应	Human,Mouse,Rat
宿主	Rabbit
克隆性	Polyclonal
预测反应	
应用	WB IHC
推荐浓度	WB: 1:200 - 1:2000 IHC: 1:50 - 1:200
理论分子量	70kDa
实测分子量	70kDa
形式	Liquid
保存条件	Store at -20°C. Avoid freeze / thaw cycles. Buffer: PBS with 0.01% thiomersal,50% glycerol,pH7.3.
偶联物	Unconjugated
阳性对照	HT-29,293T,LO2,Mouse brain,Mouse liver,Rat spleen
细胞定位	Cytoplasm
纯化	Affinity purification

抗原信息

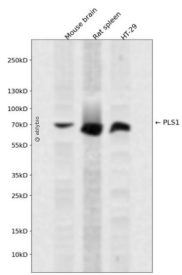
抗原信息	Recombinant fusion protein containing a sequence corresponding to amino acids 1-110 of human PLS1 (NP_001165783.1).
序列	MENSTTTISREELEELQEA FNKIDIDNSGYVSDYELQDLFKEASLPLPGYK VREIVEKILSVADSNKDGKISFE EFVSLMQELKSKDISKTFRKIINKREGITAIGGTST

靶点信息

研究背景	Plastins are a family of actin-binding proteins that are conserved throughout eukaryote evolution and expressed in most tissues of higher eukaryotes. In humans, two ubiquitous plastin isoforms (L and T) have been identified. The protein encoded by this gene is a third distinct plastin isoform, which is specifically expressed at high levels in the small intestine. Alternatively spliced transcript variants varying in the 5' UTR, but encoding the same protein, have been found for this gene. A pseudogene of this gene is found on chromosome 11.
------	---

基因ID	5357
基因名	PLS1
Swiss	Q14651
别名	PLS1;plastin-1

产品验证



Western blot analysis of PLS1 expressed in Mouse brain,Rat spleen,HT-29 using PLS1 Rabbit pAb at 1:10 00. Secondary antibody: HRP Goat Anti-Rabbit IgG (H+L) at 1:5000. Lysates/proteins: 30ug per lane. Blo cking buffer: 5% non-fat dry milk in TBST. Detection: ECL Enhanced Kit. Exposure time: 120s.

实验步骤

访问官网浏览详情: www.ablybio.cn