

PLCL1 Rabbit pAb

货号: **AYP18526**

产品信息

反应	Mouse,Rat
宿主	Rabbit
克隆性	Polyclonal
预测反应	
应用	WB
推荐浓度	WB: 1:200 - 1:2000
理论分子量	113kDa/122kDa
实测分子量	140kDa
形式	Liquid
保存条件	Store at -20°C. Avoid freeze / thaw cycles. Buffer: PBS with 0.01% thiomersal,50% glycerol,pH7.3.
偶联物	Unconjugated
阳性对照	Mouse brain,Mouse heart,Mouse kidney,Mouse lung
细胞定位	Cytoplasm
纯化	Affinity purification

抗原信息

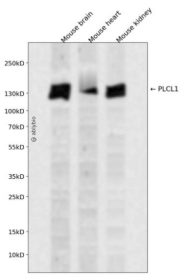
抗原信息	Recombinant fusion protein containing a sequence corresponding to amino acids 110-350 of human PLCL 1 (NP_006217.3).
序列	DCISFMQAGCELKVRPNSRIYNRFFLTDLQALRWEPSSKDKLEKAKLDISAIKEIRLGKNTETFRNGLADQICEDCAFSI LHGENYESLDLVANSADVANIWVSGRLYLVSRSKQPLDFMEGNQNTPRFMWLKTVFEAADVDGNGIMLEDTSVELIKQL NPTLKEAKIRLKFKEIQKSKEKLTRVTEEEFCEAFCELCRPEVYFLLVQISKKEYLDANDLMLFLEAEQGVTHITE

靶点信息

研究背景	Involved in an inositol phospholipid-based intracellular signaling cascade. Shows no PLC activity to phosphatidylinositol 4,5-bisphosphate and phosphatidylinositol. Component in the phospho-dependent endocytosis process of GABA A receptor (By similarity. Regulates the turnover of receptors and thus contributes to the maintenance of GABA-mediated synaptic inhibition. Its aberrant expression could contribute to the genesis and progression of lung carcinoma. Acts as an inhibitor of PPP1C.
------	--

基因ID	5334
基因名	PLCL1
Swiss	Q15111
别名	PLCL1;PLCE;PLCL;PLDL1;PPP1R127;PRIP

产品验证



Western blot analysis of PLCL1 expressed in Mouse brain, Mouse heart, Mouse kidney using PLCL1 Rabbit pAb at 1:1000. Secondary antibody: HRP Goat Anti-Rabbit IgG (H+L) at 1:5000. Lysates/proteins: 30ug per lane. Blocking buffer: 5% non-fat dry milk in TBST. Detection: ECL Enhanced Kit. Exposure time: 120 S.

实验步骤

访问官网浏览详情: www.ablybio.cn