

CCL16 Rabbit pAb

货号: **AYP18517**

产品信息

反应	Rat
宿主	Rabbit
克隆性	Polyclonal
预测反应	
应用	WB
推荐浓度	WB: 1:200 - 1:2000
理论分子量	13kDa
实测分子量	14kDa
形式	Liquid
保存条件	Store at -20°C. Avoid freeze / thaw cycles. Buffer: PBS with 0.01% thiomersal, 50% glycerol, pH7.3.
偶联物	Unconjugated
阳性对照	Rat liver
细胞定位	Secreted
纯化	Affinity purification

抗原信息

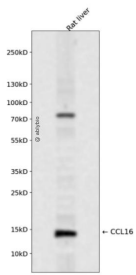
抗原信息	Recombinant fusion protein containing a sequence corresponding to amino acids 1-120 of human CCL16 (NP_004581.1).
序列	MKVSEAAALLLVLILITSAASRSQPKVPEWVNTPTSCCLKYYEKVLPRLVVGYRKALNCHLPAIIFVTKRNREVCTNPNDWVQYIKDPNLPLLPTRNLSTVKIITAKNGQPQLLSQ

靶点信息

研究背景	This gene is one of several cytokine genes clustered on the q-arm of chromosome 17. Cytokines are a family of secreted proteins involved in immunoregulatory and inflammatory processes. The CC cytokines are proteins characterized by two adjacent cysteines. The cytokine encoded by this gene displays chemotactic activity for lymphocytes and monocytes but not for neutrophils. This cytokine also shows a potent myelosuppressive activity and suppresses proliferation of myeloid progenitor cells. The expression of this gene is upregulated by IL-10.
------	---

基因ID	6360
基因名	CCL16
Swiss	O15467
别名	CCL16;CKb12;HCC-4;ILINCK;LCC-1;LEC;LMC;Mtn-1;NCC-4;NCC4;SCYA16;SCYL4

产品验证



Western blot analysis of CCL16 expressed in Rat liver using CCL16 Rabbit pAb at 1:1000. Secondary antibody: HRP Goat Anti-Rabbit IgG (H+L) at 1:5000. Lysates/proteins: 30ug per lane. Blocking buffer: 5% non-fat dry milk in TBST. Detection: ECL Enhanced Kit. Exposure time: 120s.

实验步骤

访问官网浏览详情: www.ablybio.cn