

# SHB Rabbit pAb

货号: **AYP18516**

## 产品信息

反应	Human,Mouse,Rat
宿主	Rabbit
克隆性	Polyclonal
预测反应	
应用	WB
推荐浓度	<b>WB:</b> 1:200 - 1:2000
理论分子量	30kDa/55kDa
实测分子量	55kDa
形式	Liquid
保存条件	Store at -20°C. Avoid freeze / thaw cycles. Buffer: PBS with 0.01% thiomersal,50% glycerol,pH7.3.
偶联物	Unconjugated
阳性对照	LO2,HeLa,Mouse heart,Mouse liver,Rat lung
细胞定位	Cell membrane,Cytoplasm,Cytoplasmic side,Peripheral membrane protein
纯化	Affinity purification

## 抗原信息

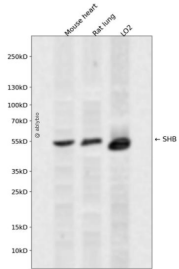
抗原信息	Recombinant fusion protein containing a sequence corresponding to amino acids 300-400 of human SHB (NP_003019.2).
序列	PYEPEGQSVSDSESTVSPRLRESKLPQDDDRPADEYDQPWEWNRVTIPALAAQFNGNEKRQSSPSPSRDRRRQLRAP GGGFKPIKHGSPEFCGILGERVD

## 靶点信息

研究背景	Adapter protein which regulates several signal transduction cascades by linking activated receptors to downstream signaling components. May play a role in angiogenesis by regulating FGFR1, VEGFR2 and PDGFR signaling. May also play a role in T-cell antigen receptor/TCR signaling, interleukin-2 signaling, apoptosis and neuronal cells differentiation by mediating basic-FGF and NGF-induced signaling cascades. May also regulate IRS1 and IRS2 signaling in insulin-producing cells.
基因ID	6461

基因名	SHB
Swiss	Q15464
别名	SHB;bA3J10.2

## 产品验证



Western blot analysis of SHB expressed in Mouse heart,Rat lung,LO2 using SHB Rabbit pAb at 1:1000. Secondary antibody: HRP Goat Anti-Rabbit IgG (H+L) at 1:5000. Lysates/proteins: 30ug per lane. Blocking buffer: 5% non-fat dry milk in TBST. Detection: ECL Enhanced Kit. Exposure time: 120s.

## 实验步骤

访问官网浏览详情: [www.ablybio.cn](http://www.ablybio.cn)