

# B3GALT4 Rabbit pAb

货号: **AYP18500**

## 产品信息

反应	Mouse
宿主	Rabbit
克隆性	Polyclonal
预测反应	
应用	WB
推荐浓度	<b>WB:</b> 1:200 - 1:2000
理论分子量	41kDa
实测分子量	42kDa
形式	Liquid
保存条件	Store at -20°C. Avoid freeze / thaw cycles. Buffer: PBS with 0.01% thiomersal, 50% glycerol, pH7.3.
偶联物	Unconjugated
阳性对照	Mouse heart
细胞定位	Golgi apparatus membrane, Single-pass type II membrane protein
纯化	Affinity purification

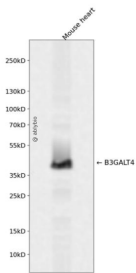
## 抗原信息

抗原信息	Recombinant fusion protein containing a sequence corresponding to amino acids 80-270 of human B3GALT4 (NP_003773.1).
序列	APENLNQRNIRASWGGLREARGRLRVQTLFLLGEPNAQHPVWGSQGSDLASESAAQGDILQAAFQDSYRNLTCLKTSLGLNWAEKHCPMARYVLKTDVYVNVPELVSELVLRGGRWGQWERSTEPQREAEQEGGQVLHSEEVPLLYLGRVHWRVNPSRTPGGRHRVSEEQWPHTWGPFPFYASGTGYVLS

## 靶点信息

研究背景	This gene is a member of the beta-1,3-galactosyltransferase (beta3GalT) gene family. This family encode s type II membrane-bound glycoproteins with diverse enzymatic functions using different donor substrate s (UDP-galactose and UDP-N-acetylglucosamine) and different acceptor sugars (N-acetylglucosamine, gal actose, N-acetylgalactosamine). The beta3GalT genes are distantly related to the Drosophila Brainiac gen e and have the protein coding sequence contained in a single exon. The beta3GalT proteins also contain c onserv ed sequences not found in the beta4GalT or alpha3GalT proteins. The carbohydrate chains synthes ized by these enzymes are designated as type 1, whereas beta4GalT enzymes synthesize type 2 carbohy drate chains. The ratio of type 1:type 2 chains changes during embryogenesis. By sequence similarity, th e beta3GalT genes fall into at least two groups: beta3GalT4 and 4 other beta3GalT genes (beta3GalT1-3, beta3GalT5). This gene is oriented telomere to centromere in close proximity to the ribosomal protein S1 8 gene. The functionality of the encoded protein is limited to ganglioseries glycolipid biosynthesis.
基因ID	8705
基因名	B3GALT4
Swiss	O96024
别名	B3GALT4;BETA3GALT4;GALT2;GALT4;beta-1

## 产品验证



Western blot analysis of B3GALT4 expressed in Mouse heart using B3GALT4 Rabbit pAb at 1:1000. Secondary antibody: HRP Goat Anti-Rabbit IgG (H+L) at 1:5000. Lysates/proteins: 30ug per lane. Blocking buffer: 5% non-fat dry milk in TBST. Detection: ECL Enhanced Kit. Exposure time: 120s.

## 实验步骤

访问官网浏览详情: [www.ablybio.cn](http://www.ablybio.cn)