

# CLIC3 Rabbit pAb

货号: **AYP18491**

## 产品信息

反应	Human,Mouse,Rat
宿主	Rabbit
克隆性	Polyclonal
预测反应	
应用	WB
推荐浓度	<b>WB:</b> 1:200 - 1:2000
理论分子量	26kDa
实测分子量	27kDa
形式	Liquid
保存条件	Store at -20°C. Avoid freeze / thaw cycles. Buffer: PBS with 0.01% thiomersal,50% glycerol,pH7.3.
偶联物	Unconjugated
阳性对照	HeLa,Mouse lung,Rat lung
细胞定位	Cytoplasm,Membrane,Nucleus,Single-pass membrane protein
纯化	Affinity purification

## 抗原信息

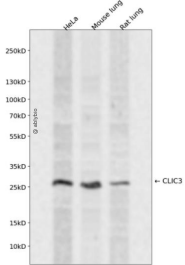
抗原信息	Recombinant fusion protein containing a sequence corresponding to amino acids 87-236 of human CLIC3 (NP_004660.2).
序列	GPPDFPSLAPRYRESNTAGNDVFHKFSAFIKNPVPAQDEALYQQLLRALARLDSYLRAPLEHELAGEPQLRESRRRFLDGD RLTLADCSLLPKLHIVDTVCAHFRQAPIPAELRGVRRYLDLSAMQEKEFKYTCPHSAEILAAAYRPAVHPR

## 靶点信息

研究背景	Chloride channels are a diverse group of proteins that regulate fundamental cellular processes including stabilization of cell membrane potential, transepithelial transport, maintenance of intracellular pH, and regulation of cell volume. Chloride intracellular channel 3 is a member of the p64 family and is predominantly localized in the nucleus and stimulates chloride ion channel activity. In addition, this protein may participate in cellular growth control, based on its association with ERK7, a member of the MAP kinase family.
基因ID	9022

基因名	CLIC3
Swiss	O95833
别名	CLIC3

## 产品验证



Western blot analysis of CLIC3 expressed in HeLa, Mouse lung, Rat lung using CLIC3 Rabbit pAb at 1:1000. Secondary antibody: HRP Goat Anti-Rabbit IgG (H+L) at 1:5000. Lysates/proteins: 30ug per lane. Blocking buffer: 5% non-fat dry milk in TBST. Detection: ECL Enhanced Kit. Exposure time: 120s.

## 实验步骤

访问官网浏览详情: [www.ablybio.cn](http://www.ablybio.cn)