

LIN7A Rabbit pAb

货号: **AYP18490**

产品信息

反应	Human,Mouse,Rat
宿主	Rabbit
克隆性	Polyclonal
预测反应	
应用	WB
推荐浓度	WB: 1:200 - 1:2000
理论分子量	25kDa
实测分子量	23-30kDa
形式	Liquid
保存条件	Store at -20°C. Avoid freeze / thaw cycles. Buffer: PBS with 0.01% thiomersal,50% glycerol,pH7.3.
偶联物	Unconjugated
阳性对照	293T,MCF7,Mouse kidney,Mouse eye,Mouse brain,Rat brain
细胞定位	Basolateral cell membrane,Cell junction,Cell membrane,Peripheral membrane protein,postsynaptic cell membrane,postsynaptic density,synapse,synaptosome,tight junction
纯化	Affinity purification

抗原信息

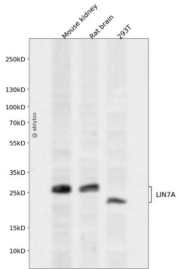
抗原信息	Recombinant fusion protein containing a sequence corresponding to amino acids 1-90 of human LIN7A (NP_004655.1).
序列	MLKPSVTSAPTADMATLTVVQPLTLDRDVARAIELLEKLQESGEVPVHKLQSLKKVLQSEFCTAIREVYQYMHETITVNGCP EFRARATA

靶点信息

研究背景	The protein encoded by this gene is involved in generating and maintaining the asymmetric distribution of channels and receptors at the cell membrane. The encoded protein also is required for the localization of some specific channels and can be part of a protein complex that couples synaptic vesicle exocytosis to cell adhesion in the brain.
基因ID	8825

基因名	LIN7A
Swiss	O14910
别名	LIN7A;LIN-7A;LIN7;MALS-1;TIP-33;VELI1

产品验证



Western blot analysis of LIN7A expressed in Mouse kidney,Rat brain,293T using LIN7A Rabbit pAb at 1:1 000. Secondary antibody: HRP Goat Anti-Rabbit IgG (H+L) at 1:5000. Lysates/proteins: 30ug per lane. Bl ocking buffer: 5% non-fat dry milk in TBST. Detection: ECL Enhanced Kit. Exposure time: 120s.

实验步骤

访问官网浏览详情: www.ablybio.cn