

EEF1E1 Rabbit pAb

货号: **AYP18483**

产品信息

反应	Human,Mouse,Rat
宿主	Rabbit
克隆性	Polyclonal
预测反应	
应用	WB IF/ICC
推荐浓度	WB: 1:200 - 1:2000 IF/ICC: 1:50 - 1:200
理论分子量	15kDa/19kDa
实测分子量	20kDa
形式	Liquid
保存条件	Store at -20°C. Avoid freeze / thaw cycles. Buffer: PBS with 0.01% thiomersal,50% glycerol,pH7.3.
偶联物	Unconjugated
阳性对照	293T,HeLa,Mouse brain,Rat brain
细胞定位	Cytoplasm,Nucleus
纯化	Affinity purification

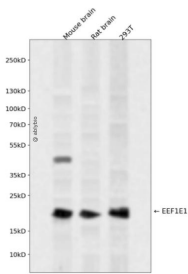
抗原信息

抗原信息	A synthetic peptide corresponding to a sequence within amino acids 1-100 of human EEF1E1 (NP_004271 .1).
序列	MAAAAELSLEKSLGLSKGNKYSAQGERQIPVLQTNNGPSLTGLTTIAAHLVKQANKEYLLGSTAEKAIQWLE YRV TQ V DGHSSKNDIHTLLKDLNS

靶点信息

研究背景	This gene encodes a multifunctional protein that localizes to both the cytoplasm and nucleus. In the cytoplasm, the encoded protein is an auxiliary component of the macromolecular aminoacyl-tRNA synthase complex. However, its mouse homolog has been shown to translocate to the nucleus in response to DNA damage, and it plays a positive role in ATM/ATR-mediated p53 activation. Alternative splicing results in multiple transcript variants. Read-through transcription also exists between this gene and the neighboring downstream MUTED (muted homolog) gene. An EEF1E1-related pseudogene has been identified on chromosome 2.
基因ID	9521
基因名	EEF1E1
Swiss	O43324
别名	EEF1E1;AIMP3;P18

产品验证



Western blot analysis of EEF1E1 expressed in Mouse brain, Rat brain, 293T using EEF1E1 Rabbit pAb at 1:1000. Secondary antibody: HRP Goat Anti-Rabbit IgG (H+L) at 1:5000. Lysates/proteins: 30ug per lane. Blocking buffer: 5% non-fat dry milk in TBST. Detection: ECL Enhanced Kit. Exposure time: 120s.

实验步骤

访问官网浏览详情: www.ablybio.cn