

BMS1 Rabbit pAb

货号: **AYP18479**

产品信息

反应	Human,Mouse,Rat
宿主	Rabbit
克隆性	Polyclonal
预测反应	
应用	WB IF/ICC
推荐浓度	WB: 1:200 - 1:2000 IF/ICC: 1:50 - 1:200
理论分子量	145kDa
实测分子量	146kDa
形式	Liquid
保存条件	Store at -20°C. Avoid freeze / thaw cycles. Buffer: PBS with 0.01% thiomersal,50% glycerol,pH7.3.
偶联物	Unconjugated
阳性对照	A-431,HeLa,HepG2,MCF7,Mouse liver,Rat liver
细胞定位	Nucleus,nucleolus
纯化	Affinity purification

抗原信息

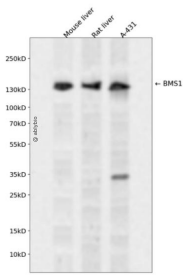
抗原信息	Recombinant fusion protein containing a sequence corresponding to amino acids 600-900 of human BMS 1 (NP_055568.3).
序列	LSAEEDSENEEAIKRLSKPSQVSSGQKLGPNFIDETSDIENLLKEEDYKEENNDSKETSALGKWKEDLSRKAAEAFLR QQQAAPNLRKLIYGTVTEDNEEEDDDTLEELGGLFRVNPDPRECKHKADSLDCSRFLVEAPHDWDLEEVMSIRDCFVT GKWEDDKDAKVLAEDEELYGDFEDLETGDVHKGKSGPNTQNEIDIEKVEEIDPDEEESAKKKHLDKRLKEMFDAE YDEGESTYFDDLKGMQKQAQLNRAEFEDQDDEARVQYEGFRPGMYVRIEINVPCEFVQN

靶点信息

研究背景	This gene likely encodes a ribosome assembly protein. A similar protein in yeast functions in 35S-rRNA processing, which includes a series of cleavage steps critical for formation of 40S ribosomes. Related pseudogenes exist on chromosomes 2, 9, 10, 15, 16, and 22.
------	--------------------------------------------------------------------------------------------------------------------------------------------------------------------------------------------------------------------------------------------------------------------------

基因ID	9790
基因名	BMS1
Swiss	Q14692
别名	BMS1;ACC;BMS1L

产品验证



Western blot analysis of BMS1 expressed in Mouse liver,Rat liver,A-431 using BMS1 Rabbit pAb at 1:1000. Secondary antibody: HRP Goat Anti-Rabbit IgG (H+L) at 1:5000. Lysates/proteins: 30ug per lane. Blocking buffer: 5% non-fat dry milk in TBST. Detection: ECL Enhanced Kit. Exposure time: 120s.

实验步骤

访问官网浏览详情: www.ablybio.cn