

ESPL1 Rabbit pAb

货号: **AYP18478**

产品信息

反应	Human,Mouse,Rat
宿主	Rabbit
克隆性	Polyclonal
预测反应	
应用	WB IF/ICC
推荐浓度	WB: 1:200 - 1:2000 IF/ICC: 1:50 - 1:200
理论分子量	197kDa/233kDa
实测分子量	233kDa
形式	Liquid
保存条件	Store at -20°C. Avoid freeze / thaw cycles. Buffer: PBS with 0.01% thiomersal,50% glycerol,pH7.3.
偶联物	Unconjugated
阳性对照	HeLa,Jurkat,Mouse spleen,Rat spleen,Rat testis
细胞定位	Cytoplasm,Nucleus
纯化	Affinity purification

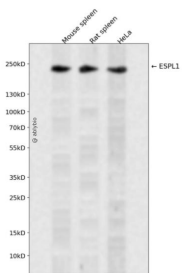
抗原信息

抗原信息	Recombinant fusion protein containing a sequence corresponding to amino acids 1220-1500 of human ES PL1 (NP_036423.4).
序列	DEILAQAYTLLEGLNQPNSLQKVLQSGLKFVAARIPHLEPWASLLLIWALTKLGGGLSCCTTQLFASSWGWQPPLIKS VPGSEPSKTQGQKRSGRGRQKLASAPLRLNNTSQKGLEGRGLPCTPKPPDRIRQAGPHVPFTVFEEVCPTESKPEVPQAP RVQQRVQTRLKVNFSDDSDLEDVSAEAWLAEERPKRRTASRGRGRARKGLSLKTDVAVPGSAPGNPGLNGRSRRAK KVASRHCEERPQRASDQARPGPEIMRTIPEEELTDNWRKM

靶点信息

研究背景	Stable cohesion between sister chromatids before anaphase and their timely separation during anaphase are critical for chromosome inheritance. In vertebrates, sister chromatid cohesion is released in 2 steps via a distinct mechanisms. The first step involves phosphorylation of STAG1 (MIM 604358) or STAG2 (MIM 300826) in the cohesin complex. The second step involves cleavage of the cohesin subunit SCC1 (RAD21; MIM 606462) by ESPL1, or separase, which initiates the final separation of sister chromatids (Sun et al., 2009 [PubMed 19345191]).[supplied by OMIM, Nov 2010]
基因ID	9700
基因名	ESPL1
Swiss	Q14674
别名	ESPL1;ESP1;SEPA;separin

产品验证



Western blot analysis of ESPL1 expressed in Mouse spleen,Rat spleen,HeLa using ESPL1 Rabbit pAb at 1:1000. Secondary antibody: HRP Goat Anti-Rabbit IgG (H+L) at 1:5000. Lysates/proteins: 30ug per lane. Blocking buffer: 5% non-fat dry milk in TBST. Detection: ECL Enhanced Kit. Exposure time: 120s.

实验步骤

访问官网浏览详情: www.ablybio.cn