

KLHL41 Rabbit pAb

货号: **AYP18469**

产品信息

反应	Human,Mouse,Rat
宿主	Rabbit
克隆性	Polyclonal
预测反应	
应用	WB
推荐浓度	WB: 1:200 - 1:2000
理论分子量	66kDa/68kDa
实测分子量	68kDa
形式	Liquid
保存条件	Store at -20°C. Avoid freeze / thaw cycles. Buffer: PBS with 0.01% thiomersal,50% glycerol,pH7.3.
偶联物	Unconjugated
阳性对照	A-549,Mouse heart,Mouse skeletal muscle,Rat skeletal muscle
细胞定位	Cell projection,Cytoplasm,Endoplasmic reticulum membrane,M line,Sarcoplasmic reticulum membrane,cytoskeleton,myofibril,pseudopodium,ruffle,sarcomere
纯化	Affinity purification

抗原信息

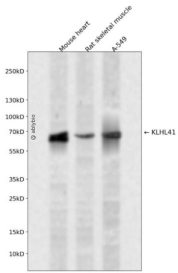
抗原信息	Recombinant fusion protein containing a sequence corresponding to amino acids 1-300 of human KLHL41 (NP_006054.2).
序列	MDSQRELAEEELRLYQSTLLQDGLKDLLDEKFKIDCTLKAGDKSLPCHRLLLSACSPYFREYFLSEIDEAKKKEVLDNVDPAI LDLIIKYLYSASIDLNDGNVQDIFALASRFQIPSVFTVCVSYLQKRLAPGNCLAILRLGLLDCPRLAISAREFVSDRFVQICKEE DFMQLSPQELISVISNDSLNVKEEEAVFEAVMKWVRTDKENRVKNLSEVFDICIRFLMTEKYFKDHVEKDIIKSNPDLQK KIKVLKDAFAGKLPEPSKNAAKTGAGEVNGDVGDEDLLPGYLNDIPRHGM

靶点信息

研究背景	This gene is a member of the kelch-like family. The encoded protein contains a BACK domain, a BTB/POZ domain, and 5 Kelch repeats. This protein is thought to function in skeletal muscle development and maintenance. Mutations in this gene have been associated with nemaline myopathy (NM), a rare congenital muscle disorder.
------	--

基因ID	10324
基因名	KLHL41
Swiss	O60662
别名	KLHL41;KBTBD10;Krp1;SARCOSIN

产品验证



Western blot analysis of KLHL41 expressed in Mouse heart, Rat skeletal muscle, A-549 using KLHL41 Rabbit pAb at 1:1000. Secondary antibody: HRP Goat Anti-Rabbit IgG (H+L) at 1:5000. Lysates/proteins: 30 ug per lane. Blocking buffer: 5% non-fat dry milk in TBST. Detection: ECL Enhanced Kit. Exposure time: 120s.

实验步骤

访问官网浏览详情: www.ablybio.cn