

LEFTY1 Rabbit pAb

货号: **AYP18467**

产品信息

反应	Human,Mouse
宿主	Rabbit
克隆性	Polyclonal
预测反应	
应用	WB
推荐浓度	WB: 1:200 - 1:2000
理论分子量	40kDa
实测分子量	39kDa
形式	Liquid
保存条件	Store at -20°C. Avoid freeze / thaw cycles. Buffer: PBS with 0.01% thiomersal,50% glycerol,pH7.3.
偶联物	Unconjugated
阳性对照	HT-29,SW480,BxPC-3,Mouse pancreas,Mouse spleen
细胞定位	Secreted
纯化	Affinity purification

抗原信息

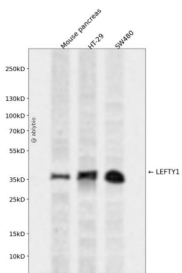
抗原信息	Recombinant fusion protein containing a sequence corresponding to amino acids 77-366 of human LEFTY 1 (NP_066277.1).
序列	RFSQSFREVAGRFLALEASTHLLVFGMEQRLPPNSELVQAVLRLRFQEPVPKAALHRHGRLSPRSARARVTVEWLRVRDDG SNRTSLIDSRVHESGWKAFDVTEAVNFWQQLSRPRQPLLLQVSVQREHLGPLASGAHKLVRFASQGAPAGLGEPQL ELHTLDLGDYGAQGDCEAPMTEGTRCCRQEMYIDLQGMKWAENWVLEPPGFLAYECVGTCTCRQPPEALAFKWPFLGP RQCIASETDSLPMIVSIKEGGTRPQVVSLPNMRVQKSCASD GALVPRRLQP

靶点信息

研究背景	This gene encodes a secreted ligand of the TGF-beta (transforming growth factor-beta) superfamily of proteins. Ligands of this family bind various TGF-beta receptors leading to recruitment and activation of SMA D family transcription factors that regulate gene expression. The encoded preproprotein is proteolytically processed to generate the mature protein, which plays a role in left-right asymmetry determination of organ systems during development. This gene is closely linked to both a related family member and a related pseudogene.
------	---

基因ID	10637
基因名	LEFTY1
Swiss	O75610
别名	LEFTY1;LEFTB;LEFTYB

产品验证



Western blot analysis of LEFTY1 expressed in Mouse pancreas, HT-29, SW480 using LEFTY1 Rabbit pAb at 1:1000. Secondary antibody: HRP Goat Anti-Rabbit IgG (H+L) at 1:5000. Lysates/proteins: 30ug per lane. Blocking buffer: 5% non-fat dry milk in TBST. Detection: ECL Enhanced Kit. Exposure time: 120s.

实验步骤

访问官网浏览详情: www.ablybio.cn