

AFG3L2 Rabbit pAb

货号: **AYP18464**

产品信息

反应	Human,Mouse,Rat
宿主	Rabbit
克隆性	Polyclonal
预测反应	
应用	WB IHC IP
推荐浓度	WB: 1:100 - 1:500 IHC: 1:50 - 1:200 IP: 1:500 - 1:1000
理论分子量	88kDa
实测分子量	80-90KDa
形式	Liquid
保存条件	Store at -20°C. Avoid freeze / thaw cycles. Buffer: PBS with 0.01% thiomersal,50% glycerol,pH7.3.
偶联物	Unconjugated
阳性对照	HeLa,HepG2,Mouse liver,Mouse kidney
细胞定位	Mitochondrion membrane,Multi-pass membrane protein
纯化	Affinity purification

抗原信息

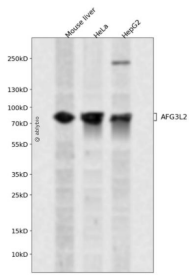
抗原信息	Recombinant fusion protein containing a sequence corresponding to amino acids 538-797 of human AFG3 L2 (NP_006787.2).
序列	DSINQKHFEQAIERVIGGLEKKTQVLQPEEKKT VAYHEAGHAVAGWYLEHADPLLKVSIIIPRGKGLGYAQYLPKEQYLYTKE QLLDRMCMTLGGRVSEEIFFGRITTTGAQDDLRKVTQSAYAQIVQFGMNEKVGQISFDLPRQGDMVLEKPYSEATARLIDD EVRILINDAYKRTVALLTEKKADVEKVALLLLEKVELDKNDMVELLGPRPFAEKSTYEEFVEGTGSLDEDTSLPEGLKDWNK EREKEKEEPPGKQVAN

靶点信息

研究背景	This gene encodes a protein localized in mitochondria and closely related to paraplegin. The paraplegin gene is responsible for an autosomal recessive form of hereditary spastic paraplegia. This gene is a candidate gene for other hereditary spastic paraplegias or neurodegenerative disorders.
------	--

基因ID	10939
基因名	AFG3L2
Swiss	Q9Y4W6
别名	AFG3L2;SCA28;SPAX5

产品验证



Western blot analysis of AFG3L2 expressed in Mouse liver, HeLa, HepG2 using AFG3L2 Rabbit pAb at 1:1000. Secondary antibody: HRP Goat Anti-Rabbit IgG (H+L) at 1:5000. Lysates/proteins: 30ug per lane. Blocking buffer: 5% non-fat dry milk in TBST. Detection: ECL Enhanced Kit. Exposure time: 120s.

实验步骤

访问官网浏览详情: www.ablybio.cn