

SEC23IP Rabbit pAb

货号: **AYP18459**

产品信息

反应	Human,Mouse,Rat
宿主	Rabbit
克隆性	Polyclonal
预测反应	
应用	WB IHC IF/ICC
推荐浓度	WB: 1:200 - 1:2000 IHC: 1:50 - 1:200 IF/ICC: 1:50 - 1:200
理论分子量	102kDa/111kDa
实测分子量	102kDa/111kDa
形式	Liquid
保存条件	Store at -20°C. Avoid freeze / thaw cycles. Buffer: PBS with 0.01% thiomersal,50% glycerol,pH7.3.
偶联物	Unconjugated
阳性对照	HEK-293 cells, mouse kidney tissue, HeLa cells, U-251 cells
细胞定位	COPII-coated vesicle membrane,Cytoplasmic side,Cytoplasmic vesicle,Endoplasmic reticulum,Peripheral membrane protein
纯化	Affinity purification

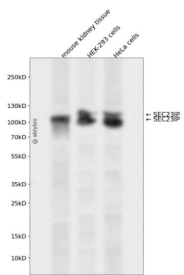
抗原信息

抗原信息	Recombinant fusion protein containing a sequence corresponding to amino acids 600-940 of human SEC23IP (NP_009121.1).
序列	NLSKCPGPLAVANGVVKQLHFQEKQMPEEPKLTLDSEYDLVVENKEVLTQETLEALSLSEYFSTFEKEKIDMESLLMCTVD DLKEMGIPLGPRKKIANFVEHKAALKKAASEKKAVAATSTKGQEQAQKTKDMASLPSESNPKRKLPGACVSSVCVN YESFEVGAGQVSVAYNSLDFEPEIFFALGSPIAMFLTIRGVDRIDENYSLPTCKGFFNIYHPLDPVAYRLEPMIVPDLDLKAVLI PHHKGRKRLHLELKESLSRMGSDLKQGFISLKSAWQTLNEFARAHTSSTQLQEELEKVANQIKEEEEKQVVEAEKVVESP DFSKDEDYLGKVG

靶点信息

研究背景	This gene encodes a member of the phosphatidic acid preferring-phospholipase A1 family. The encoded protein is localized to endoplasmic reticulum exit sites and plays a critical role in ER-Golgi transport as part of the multimeric coat protein II complex. An orthologous gene in frogs is required for normal neural crest cell development, suggesting that this gene may play a role in Waardenburg syndrome neural crest defects. Alternatively spliced transcript variants have been observed for this gene.
基因ID	11196
基因名	SEC23IP
Swiss	Q9Y6Y8
别名	SEC23IP;MSTP053;P125;P125A

产品验证



Western blot analysis of SEC23IP expressed in mouse kidney tissue, HEK-293 cells, HeLa cells using SEC23IP Rabbit pAb at 1:1000. Secondary antibody: HRP Goat Anti-Rabbit IgG (H+L) at 1:5000. Lysates/proteins: 30ug per lane. Blocking buffer: 5% non-fat dry milk in TBST. Detection: ECL Enhanced Kit. Exposure time: 120s.

实验步骤

访问官网浏览详情: www.ablybio.cn