

# MRPL46 Rabbit pAb

货号: **AYP18441**

## 产品信息

反应	Human,Mouse
宿主	Rabbit
克隆性	Polyclonal
预测反应	
应用	WB IHC IF/ICC
推荐浓度	<b>WB:</b> 1:200 - 1:2000 <b>IHC:</b> 1:50 - 1:200 <b>IF/ICC:</b> 1:50 - 1:200
理论分子量	31kDa
实测分子量	32kDa
形式	Liquid
保存条件	Store at -20°C. Avoid freeze / thaw cycles. Buffer: PBS with 0.01% thiomersal,50% glycerol,pH7.3.
偶联物	Unconjugated
阳性对照	Mouse brain
细胞定位	Mitochondrion
纯化	Affinity purification

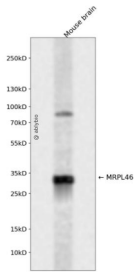
## 抗原信息

抗原信息	Recombinant fusion protein containing a sequence corresponding to amino acids 1-279 of human MRPL46 (NP_071446.2).
序列	MAAPVRRRTLLGVAGGWRRFERLWAGSLSSRSLALAAAPSSNGSPWRLLGALCLQRPPVSKPLTPLQEEMASLLQIEIER SLYSDHELRLDENQRLAKKKADLHDEEDEQDILLAQDLEDMWEQKFLQFKLGARITEADEKNDRTSLNRKLDRLVLLV REKFGDQDVWILPQAEWQPGETLRGTAERTLATLSENMEAKFLGNAPCGHYTFKFPQAMRTESNLGAKVFFFKALLLTG DFSQAGNKGHHVWVTKDELGDYLPKYLAQVRRFVSDL

## 靶点信息

研究背景	Mammalian mitochondrial ribosomal proteins are encoded by nuclear genes and help in protein synthesis within the mitochondrion. Mitochondrial ribosomes (mitoribosomes) consist of a small 28S subunit and a large 39S subunit. They have an estimated 75% protein to rRNA composition compared to prokaryotic ribosomes, where this ratio is reversed. Another difference between mammalian mitoribosomes and prokaryotic ribosomes is that the latter contain a 5S rRNA. Among different species, the proteins comprising the mitoribosome differ greatly in sequence, and sometimes in biochemical properties, which prevents easy recognition by sequence homology. This gene encodes a 39S subunit protein.
基因ID	26589
基因名	MRPL46
Swiss	Q9H2W6
别名	MRPL46;C15orf4;LIECG2;P2ECSL

## 产品验证



Western blot analysis of MRPL46 expressed in Mouse brain using MRPL46 Rabbit pAb at 1:1000. Secondary antibody: HRP Goat Anti-Rabbit IgG (H+L) at 1:5000. Lysates/proteins: 30ug per lane. Blocking buffer: 5% non-fat dry milk in TBST. Detection: ECL Enhanced Kit. Exposure time: 120s.

## 实验步骤

访问官网浏览详情: [www.ablybio.cn](http://www.ablybio.cn)