

# ADAMDEC1 Rabbit pAb

货号: **AYP18439**

## 产品信息

反应	Human
宿主	Rabbit
克隆性	Polyclonal
预测反应	
应用	WB
推荐浓度	<b>WB:</b> 1:200 - 1:2000
理论分子量	43kDa/52kDa
实测分子量	42-50kDa
形式	Liquid
保存条件	Store at -20°C. Avoid freeze / thaw cycles. Buffer: PBS with 0.01% thiomersal, 50% glycerol, pH7.3.
偶联物	Unconjugated
阳性对照	HT-29, MCF7
细胞定位	Secreted
纯化	Affinity purification

## 抗原信息

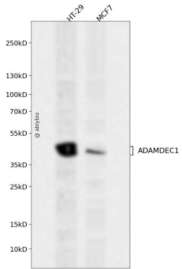
抗原信息	Recombinant fusion protein containing a sequence corresponding to amino acids 206-470 of human ADA MDEC1 (NP_055294.1).
序列	KSPEKEDFLRAQKYIDLVLVDNAFYKKNYENLTLIRSFVFDVMNLLNVIYNTIDVQVALVGMIEWSDGDKIKVWPSASTTFD NFLRWHSNGLGKKIHDHAQLLSGISFNRRVGLAASNLSLSPSSVAVIEAKKKNNVALVGVMSHELGHVLGMPDVPFNTK CPSGSCVMNQYLSSKFPKDFSTSCRAHFERYLLSQPKCLLQAPIPTNIMTTPVCGNHLLLEVGEDCDGSPKECTNLCCEA LTCKLKP GTDCGGDAPNHTTE

## 靶点信息

研究背景	This encoded protein is thought to be a secreted protein belonging to the disintegrin metalloproteinase family. Its expression is upregulated during dendritic cells maturation. This protein may play an important role in dendritic cell function and their interactions with germinal center T cells.
基因ID	27299

基因名	ADAMDEC1
Swiss	O15204
别名	ADAMDEC1;M12.219;ADAM DEC1

## 产品验证



Western blot analysis of ADAMDEC1 expressed in HT-29, MCF7 using ADAMDEC1 Rabbit pAb at 1:1000. Secondary antibody: HRP Goat Anti-Rabbit IgG (H+L) at 1:5000. Lysates/proteins: 30ug per lane. Blocking buffer: 5% non-fat dry milk in TBST. Detection: ECL Enhanced Kit. Exposure time: 120s.

## 实验步骤

访问官网浏览详情: [www.ablybio.cn](http://www.ablybio.cn)