

SRPX2 Rabbit pAb

货号: **AYP18438**

产品信息

| | |
|-------|--|
| 反应 | Mouse |
| 宿主 | Rabbit |
| 克隆性 | Polyclonal |
| 预测反应 | |
| 应用 | WB |
| 推荐浓度 | WB: 1:200 - 1:2000 |
| 理论分子量 | 52kDa |
| 实测分子量 | 53kDa |
| 形式 | Liquid |
| 保存条件 | Store at -20°C. Avoid freeze / thaw cycles. Buffer: PBS with 0.01% thiomersal, 50% glycerol, pH7.3. |
| 偶联物 | Unconjugated |
| 阳性对照 | Mouse brain |
| 细胞定位 | Cell junction, Cell surface, Cytoplasm, Secreted, synapse |
| 纯化 | Affinity purification |

抗原信息

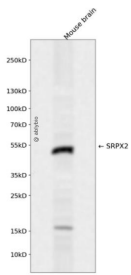
| | |
|------|--|
| 抗原信息 | Recombinant fusion protein containing a sequence corresponding to amino acids 166-465 of human SRPX 2 (NP_055282.1). |
| 序列 | DGRWSGGEPVCVDIDPPKIRCPHSREKMAEPEKLTARVYWDPLVKDSADGTITRVTLRGPEPGSHFPEGEHVIRYAYDR AYNRASCKFIVKVQVRRCPKPPQHGYLTCTSAAGDNYGATCEYHCDGGYDRQGTSPRVCQSSRQWSGSPPICAPMKIN VNVNSAAGLLDQFYEQRLLIISAPDPSNRYKMQISMLQSTCGLDLRHVTIIELVGQPPQEVGRIREQQLSANIIIEELRQF QRLTRSYFNMVLIDKQGIDRDRYMEPVTPEEIFTFIDYLLSNQELTQRREQRDICE |

靶点信息

| | |
|------|--|
| 研究背景 | This gene encodes a secreted protein that contains three sushi repeat motifs. The encoded protein may play a role in the development of speech and language centers in the brain. This protein may also be involved in angiogenesis. Mutations in this gene are the cause of bilateral perisylvian polymicrogyria, rolandic epilepsy, speech dyspraxia and mental retardation. |
|------|--|

| | |
|-------|---------------------------------|
| 基因ID | 27286 |
| 基因名 | SRPX2 |
| Swiss | O60687 |
| 别名 | SRPX2;BPP;CBPS;PMGX;RESDX;SRPUL |

产品验证



Western blot analysis of SRPX2 expressed in Mouse brain using SRPX2 Rabbit pAb at 1:1000. Secondary antibody: HRP Goat Anti-Rabbit IgG (H+L) at 1:5000. Lysates/proteins: 30ug per lane. Blocking buffer: 5% non-fat dry milk in TBST. Detection: ECL Enhanced Kit. Exposure time: 120s.

实验步骤

访问官网浏览详情: www.ablybio.cn