

SUV420H1 Rabbit pAb

货号: **AYP18433**

产品信息

反应	Human,Mouse,Rat
宿主	Rabbit
克隆性	Polyclonal
预测反应	
应用	WB
推荐浓度	WB: 1:200 - 1:2000
理论分子量	31kDa/44kDa/99kDa
实测分子量	110kDa
形式	Liquid
保存条件	Store at -20°C. Avoid freeze / thaw cycles. Buffer: PBS with 0.01% thiomersal,50% glycerol,pH7.3.
偶联物	Unconjugated
阳性对照	MCF7,HeLa,SW480,Mouse uterus,Mouse lung,Rat uterus
细胞定位	Chromosome,Nucleus
纯化	Affinity purification

抗原信息

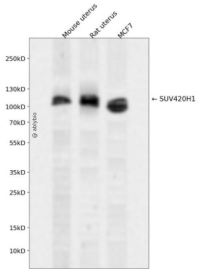
抗原信息	A synthetic peptide corresponding to a sequence within amino acids 100-200 of human SUV420H1 (NP_060105.3).
序列	MNTSAFPSRSSRHFSKSDSFSHNNPVRFRPIKGRQEELKEVIERFKKDEHLEKAFKCLTSGEWARHYFLNKNKMQEKLKFEHVFIYLRMFATDSGFEILPC

靶点信息

研究背景	This gene encodes a protein that contains a SET domain. SET domains appear to be protein-protein interaction domains that mediate interactions with a family of proteins that display similarity with dual-specificity phosphatases (dsPTases). The function of this gene has not been determined. Several alternatively spliced transcript variants encoding different isoforms have been found for this gene.
基因ID	51111

基因名	KMT5B
Swiss	Q4FZB7
别名	KMT5B;CGI-85;CGI85;SUV420H1

产品验证



Western blot analysis of SUV420H1 expressed in Mouse uterus,Rat uterus,MCF7 using SUV420H1 Rabbit pAb at 1:1000. Secondary antibody: HRP Goat Anti-Rabbit IgG (H+L) at 1:5000. Lysates/proteins: 30 ug per lane. Blocking buffer: 5% non-fat dry milk in TBST. Detection: ECL Enhanced Kit. Exposure time : 120s.

实验步骤

访问官网浏览详情: www.ablybio.cn