

SDF4 Rabbit pAb

货号: **AYP18429**

产品信息

反应	Mouse,Rat
宿主	Rabbit
克隆性	Polyclonal
预测反应	
应用	WB
推荐浓度	WB: 1:200 - 1:2000
理论分子量	15kDa/23kDa/27kDa/30kDa/39kDa/41kDa
实测分子量	45kDa
形式	Liquid
保存条件	Store at -20°C. Avoid freeze / thaw cycles. Buffer: PBS with 0.01% thiomersal,50% glycerol,pH7.3.
偶联物	Unconjugated
阳性对照	Mouse brain,Mouse kidney,Mosue liver,Mouse pancreas,Rat heart
细胞定位	Cell projection,Cytoplasm,Golgi apparatus lumen,bleb
纯化	Affinity purification

抗原信息

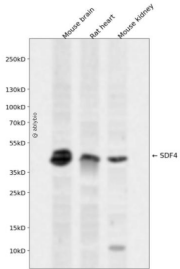
抗原信息	Recombinant fusion protein containing a sequence corresponding to amino acids 37-200 of human SDF4 (NP_057260.2).
序列	RPANHSSTRERVANREENEILPPDHLNGVKLEMDGHLNRGFHQEVFLGKDLGGFDEDAEPRRSRRKLMVIFSKVDVNTD RKISAKEMQRWIMEKTAEHFQEAMEESKTHFRAVDPDGDGHVSWDEYKVKFLASKGHSEKEVADAIRLNEELKVDEETQ EVLENL

靶点信息

研究背景	This gene encodes a stromal cell derived factor that is a member of the CREC protein family. The encode d protein contains six EF-hand motifs and calcium-binding motifs. This protein localizes to the Golgi lumen and may be involved in regulating calcium dependent cellular activities.
基因ID	51150

基因名	SDF4
Swiss	Q9BRK5
别名	SDF4;Cab45;SDF-4

产品验证



Western blot analysis of SDF4 expressed in Mouse brain,Rat heart,Mouse kidney using SDF4 Rabbit pAb at 1:1000. Secondary antibody: HRP Goat Anti-Rabbit IgG (H+L) at 1:5000. Lysates/proteins: 30ug per lane. Blocking buffer: 5% non-fat dry milk in TBST. Detection: ECL Enhanced Kit. Exposure time: 120s.

实验步骤

访问官网浏览详情: www.ablybio.cn