

# ANAPC11 Rabbit pAb

货号: **AYP18428**

## 产品信息

反应	Human,Mouse
宿主	Rabbit
克隆性	Polyclonal
预测反应	
应用	WB IHC IF/ICC
推荐浓度	<b>WB:</b> 1:200 - 1:2000 <b>IHC:</b> 1:50 - 1:200 <b>IF/ICC:</b> 1:50 - 1:200
理论分子量	9kDa/20kDa
实测分子量	12kDa
形式	Liquid
保存条件	Store at -20°C. Avoid freeze / thaw cycles. Buffer: PBS with 0.01% thiomersal,50% glycerol,pH7.3.
偶联物	Unconjugated
阳性对照	Mouse heart
细胞定位	Cytoplasm,Nucleus
纯化	Affinity purification

## 抗原信息

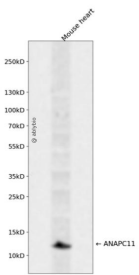
抗原信息	Recombinant fusion protein containing a sequence corresponding to amino acids 1-84 of human ANAPC11 (NP_001002245.1).
序列	MKVKIKCWNGVATLWLVANDENCGICRMAFNGCCPDCKVPGDDCPLVWGQCShCFHMHCIKWLHAQQVQQHCPMCRQEWKFKE

## 靶点信息

研究背景	Together with the cullin protein ANAPC2, constitutes the catalytic component of the anaphase promoting complex/cyclosome (APC/C, a cell cycle-regulated E3 ubiquitin ligase that controls progression through mitosis and the G1 phase of the cell cycle. The APC/C complex acts by mediating ubiquitination and subsequent degradation of target proteins: it mainly mediates the formation of 'Lys-11'-linked polyubiquitin chains and, to a lower extent, the formation of 'Lys-48'- and 'Lys-63'-linked polyubiquitin chains. May recruit the E2 ubiquitin-conjugating enzymes to the complex.
------	--

基因ID	51529
基因名	ANAPC11
Swiss	Q9NYG5
别名	ANAPC11;APC11;Apc11p;HSPC214

### 产品验证



Western blot analysis of ANAPC11 expressed in Mouse heart using ANAPC11 Rabbit pAb at 1:1000. Secondary antibody: HRP Goat Anti-Rabbit IgG (H+L) at 1:5000. Lysates/proteins: 30ug per lane. Blocking buffer: 5% non-fat dry milk in TBST. Detection: ECL Enhanced Kit. Exposure time: 120s.

### 实验步骤

访问官网浏览详情: [www.ablybio.cn](http://www.ablybio.cn)