

SLC25A39 Rabbit pAb

货号: **AYP18424**

产品信息

反应	Human,Mouse
宿主	Rabbit
克隆性	Polyclonal
预测反应	
应用	WB
推荐浓度	WB: 1:200 - 1:2000
理论分子量	38kDa/39kDa
实测分子量	39kDa
形式	Liquid
保存条件	Store at -20°C. Avoid freeze / thaw cycles. Buffer: PBS with 0.01% thiomersal,50% glycerol,pH7.3.
偶联物	Unconjugated
阳性对照	HeLa,Mouse spleen,Mouse testis
细胞定位	Mitochondrion inner membrane,Multi-pass membrane protein
纯化	Affinity purification

抗原信息

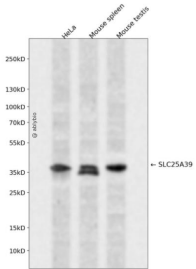
抗原信息	Recombinant fusion protein containing a sequence corresponding to amino acids 170-250 of human SLC25A39 (NP_057100.1).
序列	VISPLELMRTKLQAQHVSRYRELGACVRTAVAQGGWRSLWLGWGPTALRDVPFSALYWFNYELVKS WLNGFRPKDQTSV GMS

靶点信息

研究背景	This gene encodes a member of the SLC25 transporter or mitochondrial carrier family of proteins. Members of this family are encoded by the nuclear genome while their protein products are usually embedded in the inner mitochondrial membrane and exhibit wide-ranging substrate specificity. Although the encoded protein is currently considered an orphan transporter, this protein is related to other carriers known to transport amino acids. This protein may play a role in iron homeostasis.
基因ID	51629

基因名	SLC25A39
Swiss	Q9BZJ4
别名	SLC25A39;CGI-69;CGI69

产品验证



Western blot analysis of SLC25A39 expressed in HeLa, Mouse spleen, Mouse testis using SLC25A39 Rabbit pAb at 1:1000. Secondary antibody: HRP Goat Anti-Rabbit IgG (H+L) at 1:5000. Lysates/proteins: 30ug per lane. Blocking buffer: 5% non-fat dry milk in TBST. Detection: ECL Enhanced Kit. Exposure time: 120s.

实验步骤

访问官网浏览详情: www.ablybio.cn