

PIGX Rabbit pAb

货号: **AYP18420**

产品信息

反应	Rat
宿主	Rabbit
克隆性	Polyclonal
预测反应	
应用	WB
推荐浓度	WB: 1:200 - 1:2000
理论分子量	28kDa/30kDa
实测分子量	29kDa
形式	Liquid
保存条件	Store at -20°C. Avoid freeze / thaw cycles. Buffer: PBS with 0.01% thiomersal,50% glycerol,pH7.3.
偶联物	Unconjugated
阳性对照	Rat kidney
细胞定位	Endoplasmic reticulum membrane,Single-pass type I membrane protein
纯化	Affinity purification

抗原信息

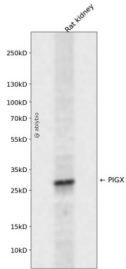
抗原信息	Recombinant fusion protein containing a sequence corresponding to amino acids 80-220 of human PIGX (NP_060331.3).
序列	LIKQDIPAGLYVDPYELASLRERNITEAVMVSENFIDIEAPNYLSKESEVLIYARRDSQCIDCFQAFLPVHCRYHRPHSEEDGEASIVVNNPDLLMFCDQEFPIKLCWAHSEVAAPCALENEDICQWNKMKYKSVYKNVILQV

靶点信息

研究背景	This gene encodes a type I transmembrane protein in the endoplasmic reticulum (ER). The protein is an essential component of glycosylphosphatidylinositol-mannosyltransferase I, which transfers the first of the four mannoses in the GPI-anchor precursors during GPI-anchor biosynthesis. Studies in rat indicate that the protein is translated from a non-AUG translation initiation site. Alternative splicing results in multiple transcript variants.
基因ID	54965

基因名	PIGX
Swiss	Q8TBF5
别名	PIGX;PIG-X

产品验证



Western blot analysis of PIGX expressed in Rat kidney using PIGX Rabbit pAb at 1:1000. Secondary antibody: HRP Goat Anti-Rabbit IgG (H+L) at 1:5000. Lysates/proteins: 30ug per lane. Blocking buffer: 5% non-fat dry milk in TBST. Detection: ECL Enhanced Kit. Exposure time: 120s.

实验步骤

访问官网浏览详情: www.ablybio.cn