

LINS1 Rabbit pAb

货号: **AYP18414**

产品信息

反应	Human,Mouse,Rat
宿主	Rabbit
克隆性	Polyclonal
预测反应	
应用	WB
推荐浓度	WB: 1:200 - 1:2000
理论分子量	46kDa/49kDa/85kDa
实测分子量	50kDa
形式	Liquid
保存条件	Store at -20°C. Avoid freeze / thaw cycles. Buffer: PBS with 0.01% thiomersal,50% glycerol,pH7.3.
偶联物	Unconjugated
阳性对照	DU145,Mouse spleen
细胞定位	
纯化	Affinity purification

抗原信息

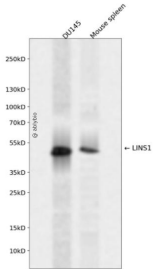
抗原信息	Recombinant fusion protein containing a sequence corresponding to amino acids 541-700 of human LINS 1 (NP_001035706.1).
序列	ICNNFDATESKYDISICGCVPSLVQDQSSNQTIPHRLTAPHSHRDVRCARHSWASDAPSEPLKAVMSKGAHTMCASSLSSP RASQSLVDYDSSDDSDVESTEQLANSKQTSLHQATKEIQDAAGTSRDKKEFSLEPPSRPLVLKEFDTAFFDCEVAPN

靶点信息

研究背景	The Drosophila segment polarity gene <i>lin</i> encodes a protein, <i>lines</i> , which plays important roles in development of the epidermis and hindgut. This gene encodes a protein containing a <i>lines</i> -like domain. This gene is located on chromosome 15 and clustered with the gene encoding ankyrin repeat and SOCS box-containing protein 7. Alternative splicing results in multiple transcript variants.
基因ID	55180

基因名	LINS1
Swiss	Q8NG48
别名	LINS1;LINS;MRT27;WINS1

产品验证



Western blot analysis of LINS1 expressed in DU145, Mouse spleen using LINS1 Rabbit pAb at 1:1000. Secondary antibody: HRP Goat Anti-Rabbit IgG (H+L) at 1:5000. Lysates/proteins: 30ug per lane. Blocking buffer: 5% non-fat dry milk in TBST. Detection: ECL Enhanced Kit. Exposure time: 120s.

实验步骤

访问官网浏览详情: www.ablybio.cn