

DRAM1 Rabbit pAb

货号: **AYP18410**

产品信息

反应	Mouse
宿主	Rabbit
克隆性	Polyclonal
预测反应	
应用	WB
推荐浓度	WB: 1:200 - 1:2000
理论分子量	13kDa/26kDa
实测分子量	26kDa
形式	Liquid
保存条件	Store at -20°C. Avoid freeze / thaw cycles. Buffer: PBS with 0.01% thiomersal,50% glycerol,pH7.3.
偶联物	Unconjugated
阳性对照	Mouse lung,Mouse liver,Mouse kidney
细胞定位	Lysosome membrane,Multi-pass membrane protein
纯化	Affinity purification

抗原信息

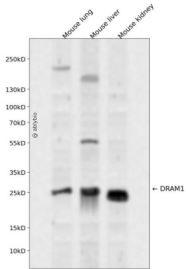
抗原信息	A synthetic peptide corresponding to a sequence within amino acids 100-200 of human DRAM1 (NP_060840.2).
序列	GLVGCFGMGIVANFQELAVPVVHDGGALLAFVCGVVYTLQSIISYKSCPQWNSLSTCHIRMVISAVSAAVIPMIVCASLISITKLEWNPREKDYYVHV

靶点信息

研究背景	This gene is regulated as part of the p53 tumor suppressor pathway. The gene encodes a lysosomal membrane protein that is required for the induction of autophagy by the pathway. Decreased transcriptional expression of this gene is associated with various tumors. This gene has a pseudogene on chromosome 4.
基因ID	55332

基因名	DRAM1
Swiss	Q8N682
别名	DRAM1;DRAM

产品验证



Western blot analysis of DRAM1 expressed in Mouse lung, Mouse liver, Mouse kidney using DRAM1 Rabbit pAb at 1:1000. Secondary antibody: HRP Goat Anti-Rabbit IgG (H+L) at 1:5000. Lysates/proteins: 30ug per lane. Blocking buffer: 5% non-fat dry milk in TBST. Detection: ECL Enhanced Kit. Exposure time: 120s.

实验步骤

访问官网浏览详情: www.ablybio.cn