

SLC12A5 Rabbit pAb

货号: **AYP18397**

产品信息

反应	Human,Mouse,Rat
宿主	Rabbit
克隆性	Polyclonal
预测反应	
应用	WB
推荐浓度	WB: 1:200 - 1:2000
理论分子量	123kDa/126kDa
实测分子量	110-260kDa
形式	Liquid
保存条件	Store at -20°C. Avoid freeze / thaw cycles. Buffer: PBS with 0.01% thiomersal,50% glycerol,pH7.3.
偶联物	Unconjugated
阳性对照	Mouse brain,Rat brain
细胞定位	Membrane,Multi-pass membrane protein
纯化	Affinity purification

抗原信息

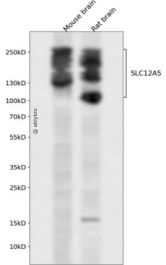
抗原信息	Recombinant fusion protein containing a sequence corresponding to amino acids 945-1025 of human SLC 12A5 (NP_001128243.1).
序列	TKNEREREIQSITDESRGSIRRKPNANTRLRRLNVPEETAGDSEEKPEEEVQLIHDQSAPSCPSSSPSPGEEPEGEGETDPE

靶点信息

研究背景	K-Cl cotransporters are proteins that lower intracellular chloride concentrations below the electrochemical equilibrium potential. The protein encoded by this gene is an integral membrane K-Cl cotransporter that can function in either a net efflux or influx pathway, depending on the chemical concentration gradients of potassium and chloride. The encoded protein can act as a homomultimer, or as a heteromultimer with other K-Cl cotransporters, to maintain chloride homeostasis in neurons. Alternative splicing results in two transcript variants encoding different isoforms.
基因ID	57468

基因名	SLC12A5
Swiss	Q9H2X9
别名	SLC12A5;EIEE34;EIG14;KCC2;hKCC2

产品验证



Western blot analysis of SLC12A5 expressed in Mouse brain,Rat brain using SLC12A5 Rabbit pAb at 1:1000. Secondary antibody: HRP Goat Anti-Rabbit IgG (H+L) at 1:5000. Lysates/proteins: 30ug per lane. Blocking buffer: 5% non-fat dry milk in TBST. Detection: ECL Enhanced Kit. Exposure time: 120s.

实验步骤

访问官网浏览详情: www.ablybio.cn