

RAB22A Rabbit pAb

货号: **AYP18396**

产品信息

反应	Mouse
宿主	Rabbit
克隆性	Polyclonal
预测反应	
应用	WB
推荐浓度	WB: 1:200 - 1:2000
理论分子量	21kDa
实测分子量	22kDa
形式	Liquid
保存条件	Store at -20°C. Avoid freeze / thaw cycles. Buffer: PBS with 0.01% thiomersal, 50% glycerol, pH7.3.
偶联物	Unconjugated
阳性对照	Mouse brain, Mouse heart, Mouse kidney
细胞定位	Cell membrane, Cell projection, Cytoplasmic side, Cytoplasmic vesicle, Early endosome, Endosome membrane, Lipid-anchor, phagosome, phagosome membrane, ruffle
纯化	Affinity purification

抗原信息

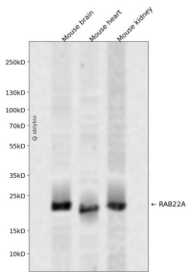
抗原信息	A synthetic peptide corresponding to a sequence within amino acids 1-100 of human RAB22A (NP_065724.1).
序列	MALRELKVCLLGDTGVGKSSIVWRFVEDSFDPNINPTIGASFMTKTVQYQNELHKFLIWDTAGQERFRALAPMYRGSAA AIIVYDITKEETFSTLKNWV

靶点信息

研究背景	The protein encoded by this gene is a member of the RAB family of small GTPases. The GTP-bound form of the encoded protein has been shown to interact with early-endosomal antigen 1, and may be involved in the trafficking of and interaction between endosomal compartments.
基因ID	57403

基因名	RAB22A
Swiss	Q9UL26
别名	RAB22A

产品验证



Western blot analysis of RAB22A expressed in Mouse brain, Mouse heart, Mouse kidney using RAB22A R abbit pAb at 1:1000. Secondary antibody: HRP Goat Anti-Rabbit IgG (H+L) at 1:5000. Lysates/proteins: 30ug per lane. Blocking buffer: 5% non-fat dry milk in TBST. Detection: ECL Enhanced Kit. Exposure time: 120s.

实验步骤

访问官网浏览详情: www.ablybio.cn