

MS4A7 Rabbit pAb

货号: **AYP18389**

产品信息

反应	Mouse
宿主	Rabbit
克隆性	Polyclonal
预测反应	
应用	WB
推荐浓度	WB: 1:200 - 1:2000
理论分子量	21kDa/26kDa
实测分子量	26kDa
形式	Liquid
保存条件	Store at -20°C. Avoid freeze / thaw cycles. Buffer: PBS with 0.01% thiomersal,50% glycerol,pH7.3.
偶联物	Unconjugated
阳性对照	Mouse spleen
细胞定位	Membrane,Multi-pass membrane protein
纯化	Affinity purification

抗原信息

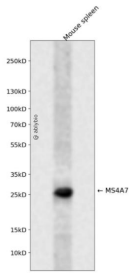
抗原信息	A synthetic peptide corresponding to a sequence within amino acids 100-200 of human MS4A7 (NP_067024.1).
序列	SLSIISGKQSTKPFDLSSLTSNAVSSVTAGAGLFLLDMSMVALRTASQHCSEM DYLSSLPYSEYYYPIYEIKDLLTSVSLT GVLVVMLIFTVLELLAA

靶点信息

研究背景	This gene encodes a member of the membrane-spanning 4A gene family, members of which are characterized by common structural features and similar intron/exon splice boundaries and display unique expression patterns in hematopoietic cells and nonlymphoid tissues. This family member is associated with mature cellular function in the monocytic lineage, and it may be a component of a receptor complex involved in signal transduction. This gene is localized to 11q12, in a cluster of other family members. At least four alternatively spliced transcript variants encoding two distinct isoforms have been observed.
------	---

基因ID	58475
基因名	MS4A7
Swiss	Q9GZW8
别名	MS4A7;4SPAN2;CD20L4;CFFM4;MS4A8

产品验证



Western blot analysis of MS4A7 expressed in Mouse spleen using MS4A7 Rabbit pAb at 1:1000. Secondary antibody: HRP Goat Anti-Rabbit IgG (H+L) at 1:5000. Lysates/proteins: 30ug per lane. Blocking buffer: 5% non-fat dry milk in TBST. Detection: ECL Enhanced Kit. Exposure time: 120s.

实验步骤

访问官网浏览详情: www.ablybio.cn