

# SLC46A2 Rabbit pAb

货号: **AYP18388**

## 产品信息

反应	Human,Mouse
宿主	Rabbit
克隆性	Polyclonal
预测反应	
应用	WB
推荐浓度	<b>WB:</b> 1:200 - 1:2000
理论分子量	51kDa
实测分子量	51kDa
形式	Liquid
保存条件	Store at -20°C. Avoid freeze / thaw cycles. Buffer: PBS with 0.01% thiomersal,50% glycerol,pH7.3.
偶联物	Unconjugated
阳性对照	LO2,Raji,MCF7,Mouse heart,Mouse brain,Mouse spleen
细胞定位	Cell membrane,Multi-pass membrane protein
纯化	Affinity purification

## 抗原信息

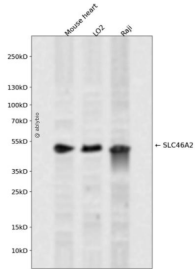
抗原信息	Recombinant fusion protein containing a sequence corresponding to amino acids 1-110 of human SLC46A2 (NP_149040.3).
序列	MSPEVTCPRRHLPFRHPTWVEPVVASSQVAASLYDAGLLLVKASYGTGGSSNHSASPSPRGALEDQQRAISNFYIYNLWVGLSPLLSAYGLGWLSDRYHRKISIC

## 靶点信息

研究背景	Predicted to enable transmembrane transporter activity. Involved in positive regulation of nucleotide-binding activity oligomerization domain containing 1 signaling pathway. Predicted to be located in cell surface and plasma membrane. Predicted to be integral component of membrane.
基因ID	57864

基因名	SLC46A2
Swiss	Q9BY10
别名	SLC46A2;Ly110;TSCOT

## 产品验证



Western blot analysis of SLC46A2 expressed in Mouse heart,LO2,Raji using SLC46A2 Rabbit pAb at 1:1 000. Secondary antibody: HRP Goat Anti-Rabbit IgG (H+L) at 1:5000. Lysates/proteins: 30ug per lane. Blocking buffer: 5% non-fat dry milk in TBST. Detection: ECL Enhanced Kit. Exposure time: 120s.

## 实验步骤

访问官网浏览详情: [www.ablybio.cn](http://www.ablybio.cn)