

MIS12 Rabbit pAb

货号: **AYP18380**

产品信息

反应	Human
宿主	Rabbit
克隆性	Polyclonal
预测反应	
应用	WB
推荐浓度	WB: 1:200 - 1:2000
理论分子量	24kDa
实测分子量	24kDa
形式	Liquid
保存条件	Store at -20°C. Avoid freeze / thaw cycles. Buffer: PBS with 0.01% thiomersal, 50% glycerol, pH7.3.
偶联物	Unconjugated
阳性对照	HeLa, 293T, LO2
细胞定位	Chromosome, Nucleus, centromere, kinetochore
纯化	Affinity purification

抗原信息

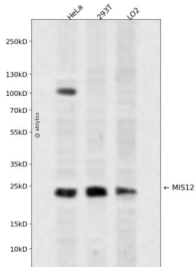
抗原信息	Recombinant fusion protein containing a sequence corresponding to amino acids 1-205 of human MIS12 (NP_076944.1).
序列	MSVDPMTYEAQFFGFTPQTCMLRIYAFQDYLFVEMQAVEQVILKKLDGIPDCDISPVQIRKCTEKFLCFMKGHFDNLFSKM EQLFLQLILRIPSNILLPEDKCKETPYSEEDFQHLQKEIEQLQEYKTELCTKQALLAELEEQKIVQAKLKQTLTFFDELHNVGR DHGTSDFRESLVSLVQNSRKLQNIIRDNVEKESKRLKIS

靶点信息

研究背景	Part of the MIS12 complex which is required for normal chromosome alignment and segregation and for kinetochore formation during mitosis. Essential for proper kinetochore microtubule attachments.
基因ID	79003

基因名	MIS12
Swiss	Q9H081
别名	MIS12;2510025F08Rik;KNTC2AP;MTW1;hMis12

产品验证



Western blot analysis of MIS12 expressed in HeLa,293T,LO2 using MIS12 Rabbit pAb at 1:1000. Secondary antibody: HRP Goat Anti-Rabbit IgG (H+L) at 1:5000. Lysates/proteins: 30ug per lane. Blocking buffer: 5% non-fat dry milk in TBST. Detection: ECL Enhanced Kit. Exposure time: 120s.

实验步骤

访问官网浏览详情: www.ablybio.cn