

WDR61 Rabbit pAb

货号: **AYP18371**

产品信息

反应	Human,Mouse,Rat
宿主	Rabbit
克隆性	Polyclonal
预测反应	
应用	WB IHC
推荐浓度	WB: 1:200 - 1:2000 IHC: 1:50 - 1:200
理论分子量	33kDa
实测分子量	36kDa
形式	Liquid
保存条件	Store at -20°C. Avoid freeze / thaw cycles. Buffer: PBS with 0.01% thiomersal,50% glycerol,pH7.3.
偶联物	Unconjugated
阳性对照	HeLa,A-549,mouse stomach,mouse brain,mouse kidney,rat pancreas
细胞定位	Cytoplasm,Nucleus
纯化	Affinity purification

抗原信息

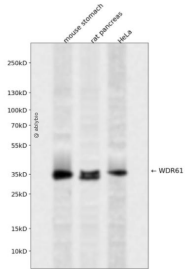
抗原信息	Recombinant fusion protein containing a sequence corresponding to amino acids 1-305 of human WDR61 (NP_079510.1).
序列	MTNQYGILFKQEQAHDDAIWSVAWGTVNKKENSETVVTGSLDDLKVKWWRDERLDLQWSLEGHQLGVVSVDISHTLPI AASSSLDAHIRLWDLNKGKQIKSIDAGPVDWTLAFSPDSQYLATGTHVGKVNIFGVESGKKEYSLDTRGKFILSIAYSPD GKYLASGAIDGIINIFDIATGKLLHTLEGHAMPISLTFSPDSQLLVASDDGYIKIYDVQHANLAGTSLGHASWVNLNVAFCP DDTHFVSSSSDKSVKVDVGTGTRCVHTFFDHQDQVWGVKYNNGSKIVSVGDDQEIHIDCPI

靶点信息

研究背景	
基因ID	80349

基因名	WDR61
Swiss	Q9GZS3
别名	WDR61;REC14;SKI8

产品验证



Western blot analysis of WDR61 expressed in mouse stomach, rat pancreas, HeLa using WDR61 Rabbit p Ab at 1:1000. Secondary antibody: HRP Goat Anti-Rabbit IgG (H+L) at 1:5000. Lysates/proteins: 30ug per lane. Blocking buffer: 5% non-fat dry milk in TBST. Detection: ECL Enhanced Kit. Exposure time: 120s

实验步骤

访问官网浏览详情: www.ablybio.cn