

LLPH Rabbit pAb

货号: **AYP18362**

产品信息

反应	Human,Rat
宿主	Rabbit
克隆性	Polyclonal
预测反应	
应用	WB IF/ICC
推荐浓度	WB: 1:200 - 1:2000 IF/ICC: 1:50 - 1:200
理论分子量	15kDa
实测分子量	24kDa
形式	Liquid
保存条件	Store at -20°C. Avoid freeze / thaw cycles. Buffer: PBS with 0.01% thiomersal,50% glycerol,pH7.3.
偶联物	Unconjugated
阳性对照	293T,BxPC-3
细胞定位	nucleolus
纯化	Affinity purification

抗原信息

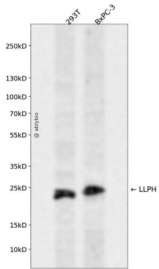
抗原信息	Recombinant fusion protein containing a sequence corresponding to amino acids 1-129 of human LLPH (N P_115714.1).
序列	MAKSLRSKWKRKMRAEKRRKNAPKEASRLKSILKLDGDVLMKDVQEIATVVVPPKPKHCQEKMQCEVKDEKDDMKMETDI KRKKTLDDQHGQYPIWMNQRQRRLKAKREKRKGKSKAKAVKVAKGLAW

靶点信息

研究背景	In hippocampal neurons, regulates dendritic and spine growth and synaptic transmission.
基因ID	84298
基因名	LLPH

Swiss	Q9BRT6
别名	LLPH;C12orf31;hLLP

产品验证



Western blot analysis of LLPH expressed in 293T, BxPC-3 using LLPH Rabbit pAb at 1:1000. Secondary anti body: HRP Goat Anti-Rabbit IgG (H+L) at 1:5000. Lysates/proteins: 30ug per lane. Blocking buffer: 5% non-fat dry milk in TBST. Detection: ECL Enhanced Kit. Exposure time: 120s.

实验步骤

访问官网浏览详情: www.ablybio.cn