

SPPL2A Rabbit pAb

货号: **AYP18357**

产品信息

反应	Human,Mouse,Rat
宿主	Rabbit
克隆性	Polyclonal
预测反应	
应用	WB IHC
推荐浓度	WB: 1:200 - 1:2000 IHC: 1:50 - 1:200
理论分子量	58kDa
实测分子量	57kDa
形式	Liquid
保存条件	Store at -20°C. Avoid freeze / thaw cycles. Buffer: PBS with 0.01% thiomersal,50% glycerol,pH7.3.
偶联物	Unconjugated
阳性对照	HeLa,Jurkat,Mouse brain,Rat small intestine
细胞定位	Late endosome membrane,Luminal side,Lysosome membrane,Membrane,Multi-pass membrane protein
纯化	Affinity purification

抗原信息

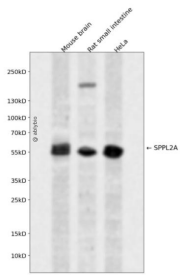
抗原信息	Recombinant fusion protein containing a sequence corresponding to amino acids 421-520 of human SPPL 2A (NP_116191.2).
序列	AYCRRFDVQTGSSYIYYVSSTVAYAIGMILTFVVLVLMKKGQPALLYLVPCTLITASVVAWRRKEMKKFWKGNYSQMMDHLDCATNEENPVISGEQIVQQ

靶点信息

研究背景	This gene encodes a member of the GXGD family of aspartic proteases, which are transmembrane proteins with two conserved catalytic motifs localized within the membrane-spanning regions, as well as a member of the signal peptide peptidase-like protease (SPPL) family. This protein is expressed in all major adult human tissues and localizes to late endosomal compartments and lysosomal membranes. A pseudogene of this gene also lies on chromosome 15.
------	---

基因ID	84888
基因名	SPPL2A
Swiss	Q8TCT8
别名	SPPL2A;IMP3;PSL2

产品验证



Western blot analysis of SPPL2A expressed in Mouse brain,Rat small intestine,HeLa using SPPL2A Rabbit pAb at 1:1000. Secondary antibody: HRP Goat Anti-Rabbit IgG (H+L) at 1:5000. Lysates/proteins: 30ug per lane. Blocking buffer: 5% non-fat dry milk in TBST. Detection: ECL Enhanced Kit. Exposure time: 120s.

实验步骤

访问官网浏览详情: www.ablybio.cn