

SLC25A26 Rabbit pAb

货号: **AYP18341**

产品信息

反应	Mouse
宿主	Rabbit
克隆性	Polyclonal
预测反应	
应用	WB
推荐浓度	WB: 1:200 - 1:2000
理论分子量	7kDa/20kDa/29kDa
实测分子量	33kDa
形式	Liquid
保存条件	Store at -20°C. Avoid freeze / thaw cycles. Buffer: PBS with 0.01% thiomersal,50% glycerol,pH7.3.
偶联物	Unconjugated
阳性对照	Mouse testis,Mouse brain
细胞定位	Mitochondrion inner membrane,Multi-pass membrane protein
纯化	Affinity purification

抗原信息

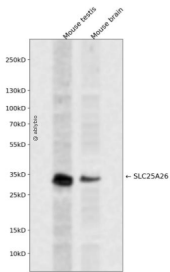
抗原信息	Recombinant fusion protein containing a sequence corresponding to amino acids 105-185 of human SLC25A26 (NP_775742.4).
序列	IRVPSEVVKQRAQVSASTRTFQIFSNIYYEEGIQGLYRGYKSTVLREIPFSLVQFPLWESLKALWSWRQDHVVDVSWQSAVC

靶点信息

研究背景	This gene is a member of the mitochondrial carrier family which includes nuclear-encoded transporters localized on the inner mitochondrial membranes. Members of the family transport important small molecules across the mitochondrial inner membrane. This protein is involved in the transport of S-adenosylmethionine (SAM) into the mitochondria. Mutations in this gene are associated with combined oxidative phosphorylation deficiency 28. Alternative splicing results in multiple transcript variants encoding different isoforms.
基因ID	115286

基因名	SLC25A26
Swiss	Q70HW3
别名	SLC25A26;COXPD28;SAMC

产品验证



Western blot analysis of SLC25A26 expressed in Mouse testis, Mouse brain using SLC25A26 Rabbit pAb at 1:1000. Secondary antibody: HRP Goat Anti-Rabbit IgG (H+L) at 1:5000. Lysates/proteins: 30ug per lane. Blocking buffer: 5% non-fat dry milk in TBST. Detection: ECL Enhanced Kit. Exposure time: 120s.

实验步骤

访问官网浏览详情: www.ablybio.cn