

OTUD7A Rabbit pAb

货号: **AYP18331**

产品信息

反应	Human
宿主	Rabbit
克隆性	Polyclonal
预测反应	
应用	WB
推荐浓度	WB: 1:200 - 1:2000
理论分子量	
实测分子量	105kDa
形式	Liquid
保存条件	Store at -20°C. Avoid freeze / thaw cycles. Buffer: PBS with 0.01% thiomersal, 50% glycerol, pH7.3.
偶联物	Unconjugated
阳性对照	U-251MG
细胞定位	Cytoplasm, Nucleus
纯化	Affinity purification

抗原信息

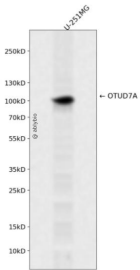
抗原信息	A synthetic peptide corresponding to a sequence within amino acids 800-900 of mouse OTUD7A (NP_570950.1).
序列	RPCATYPQQNRSLWSQSYSPARSALRTVNTVESLAPGGADAPGPAEHKSQTYSNFGAARDGLEFADADAPAARSNAE CGRGGPGPAQRRCQRENCAFYGR

靶点信息

研究背景	Predicted to enable K63-linked polyubiquitin modification-dependent protein binding activity and thiol-dependent deubiquitinase. Predicted to be involved in negative regulation of I-kappaB kinase/NF-kappaB signaling and protein deubiquitination. Predicted to act upstream of or within proteolysis. Predicted to be active in cytoplasm and nucleus. Used to study chromosome 15q13.3 microdeletion syndrome. Orthologous to human OTUD7A (OTU deubiquitinase 7A).
基因ID	170711

基因名	
Swiss	
别名	OTUD7A;C15orf16;C16ORF15;CEZANNE2;OTUD7

产品验证



Western blot analysis of OTUD7A expressed in U-251MG using OTUD7A Rabbit pAb at 1:1000. Secondary antibody: HRP Goat Anti-Rabbit IgG (H+L) at 1:5000. Lysates/proteins: 30ug per lane. Blocking buffer: 5% non-fat dry milk in TBST. Detection: ECL Enhanced Kit. Exposure time: 120s.

实验步骤

访问官网浏览详情: www.ablybio.cn