

CD163L1 Rabbit pAb

货号: AYP18330

产品信息

反应	Rat
宿主	Rabbit
克隆性	Polyclonal
预测反应	
应用	WB
推荐浓度	WB: 1:200 - 1:2000
理论分子量	79kDa/155kDa/159kDa/160kDa
实测分子量	159kDa
形式	Liquid
保存条件	Store at -20°C. Avoid freeze / thaw cycles. Buffer: PBS with 0.01% thiomersal, 50% glycerol, pH7.3.
偶联物	Unconjugated
阳性对照	Rat heart, Rat lung
细胞定位	Cell membrane, Secreted, Single-pass type I membrane protein
纯化	Affinity purification

抗原信息

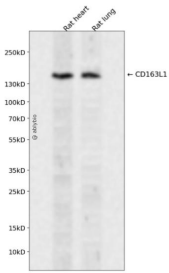
抗原信息	Recombinant fusion protein containing a sequence corresponding to amino acids 350-550 of human CD163L1 (NP_777601.2).
序列	DCLHQNDVSVICSDGADLELRLADGSNNCSGRVEVRIHEQWWTICDQNWKNEQALVVCKQLGCPFSVFGSRRRAKPSNEARDIWINSISCTGNESALWDCTYDGGKAKRTCFRRSDAGVICSDKADLDLRLVGAHSPCYGRLEVKYQGEWGTVCHDRWSTRNAAVVCKQLGCGKPMHVFGMTYFKEASGPIWLDDVSCIGNES

靶点信息

研究背景	This gene encodes a member of the scavenger receptor cysteine-rich (SRCR) superfamily. Members of this family are secreted or membrane-anchored proteins mainly found in cells associated with the immune system. The SRCR family is defined by a 100-110 amino acid SRCR domain, which may mediate protein-protein interaction and ligand binding. The encoded protein contains twelve SRCR domains, a transmembrane region and a cytoplasmic domain. Alternative splicing results in multiple transcript variants encoding different isoforms.
------	--

基因ID	283316
基因名	CD163L1
Swiss	Q9NR16
别名	CD163L1;CD163B;M160;SCARI2;WC1

产品验证



Western blot analysis of CD163L1 expressed in Rat heart,Rat lung using CD163L1 Rabbit pAb at 1:1000. Secondary antibody: HRP Goat Anti-Rabbit IgG (H+L) at 1:5000. Lysates/proteins: 30ug per lane. Blocking buffer: 5% non-fat dry milk in TBST. Detection: ECL Enhanced Kit. Exposure time: 120s.

实验步骤

访问官网浏览详情: www.ablybio.cn