

ENTPD6 Rabbit pAb

货号: **AYP18314**

产品信息

反应	Human,Mouse,Rat
宿主	Rabbit
克隆性	Polyclonal
预测反应	
应用	WB IHC
推荐浓度	WB: 1:500 - 1:2000 IHC: 1:100 - 1:200
理论分子量	51kDa/53kDa
实测分子量	45kDa
形式	Liquid
保存条件	Store at -20°C. Avoid freeze / thaw cycles. Buffer: PBS with 0.01% thiomersal,50% glycerol,pH7.3.
偶联物	Unconjugated
阳性对照	Mouse brain,Mouse spleen,Rat brain,Rat spleen
细胞定位	Golgi apparatus membrane,Secreted,Single-pass type II membrane protein
纯化	Affinity purification

抗原信息

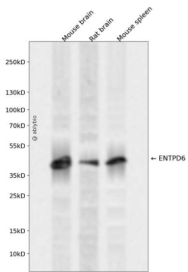
抗原信息	Recombinant fusion protein containing a sequence corresponding to amino acids 61-300 of human ENTPD 6 (NP_001304870.1).
序列	WHRATATQAFFSITRAAPGARWGWQAHSPLGTAADGHEVFGIMFDAGSTGTRVHVFQFTRPPRETPTLTHETFKALKP GLSAYADDVEKSAQGIRELLDVAKQDIPDFWKATPLVLKATAGLRLLPGEKAQKLLQKVKEVFKASPFLVGDDCVSIMNG TDEGVSAWITINFLTGSLKTPGGSSVGMIDLGGGSTQIAFLPRVEGTLQASPPGYLTALRMFNRTYKLYSYSYLGLGLMS

靶点信息

研究背景	ENTPD6 is similar to E-type nucleotidases (NTPases). NTPases, such as CD39, mediate catabolism of extracellular nucleotides. ENTPD6 contains 4 apyrase-conserved regions which are characteristic of NTPases. Alternative splicing results in multiple transcript variants encoding different isoforms.
基因ID	955

基因名	ENTPD6
Swiss	O75354
别名	ENTPD6;CD39L2;IL-6SAG;IL6ST2;NTPDase-6;dJ738P15.3

产品验证



Western blot analysis of ENTPD6 expressed in Mouse brain,Rat brain,Mouse spleen using ENTPD6 Rabbit pAb at 1:1000. Secondary antibody: HRP Goat Anti-Rabbit IgG (H+L) at 1:5000. Lysates/proteins: 30ug per lane. Blocking buffer: 5% non-fat dry milk in TBST. Detection: ECL Enhanced Kit. Exposure time: 120s.

实验步骤

访问官网浏览详情: www.ablybio.cn