

CPA3 Rabbit pAb

货号: **AYP18311**

产品信息

反应	Mouse,Rat
宿主	Rabbit
克隆性	Polyclonal
预测反应	
应用	WB
推荐浓度	WB: 1:500 - 1:1000
理论分子量	48kDa
实测分子量	49KDa
形式	Liquid
保存条件	Store at -20°C. Avoid freeze / thaw cycles. Buffer: PBS with 0.01% thiomersal,50% glycerol,pH7.3.
偶联物	Unconjugated
阳性对照	Mouse pancreas,Rat pancreas
细胞定位	Cytoplasmic vesicle,secretory vesicle
纯化	Affinity purification

抗原信息

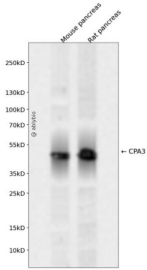
抗原信息	Recombinant fusion protein containing a sequence corresponding to amino acids 110-417 of human CPA3 (NP_001861.2).
序列	IPGRHSYAKYNNWEKIVAWTEKMMDKYPEMVSRIKIGSTVEDNPLYVLKIGEKNERRKAIFTDCGIHAREWVSPAFCQWVYQATKTYGRNKIMTKLLDRMNFYILPVFNVDGYIWSWTKNRMWRKNRSKNQNSKICIGTDLNRNFNASWNSIPNTNDPCA DNYRGSAPESKTKAVTNFIRSHLNEIKVYITFHSYSQMLLFPYGYTSKLPNHEDLAKVAKIGTDVLS TRYETRYIYGPIEST IYPISGSSLDWAYDLGIKHTFAFELRDKGKFGFLLPESRIKPTCRETMLAVKFIKYILKHTS

靶点信息

研究背景	This gene encodes a member of the carboxypeptidase A family of zinc metalloproteases. The encoded preproprotein is proteolytically processed to generate a mature protease that is released by mast cells and may be involved in the degradation of endogenous proteins and the inactivation of venom-associated peptides. Expression of this gene may be elevated in human asthma patients.
------	--

基因ID	1359
基因名	CPA3
Swiss	P15088
别名	CPA3;MC-CPA

产品验证



Western blot analysis of CPA3 expressed in Mouse pancreas,Rat pancreas using CPA3 Rabbit pAb at 1:1000. Secondary antibody: HRP Goat Anti-Rabbit IgG (H+L) at 1:5000. Lysates/proteins: 30ug per lane. Blocking buffer: 5% non-fat dry milk in TBST. Detection: ECL Enhanced Kit. Exposure time: 120s.

实验步骤

访问官网浏览详情: www.ablybio.cn