

GSTM5 Rabbit pAb

货号: **AYP18298**

产品信息

反应	Mouse,Rat
宿主	Rabbit
克隆性	Polyclonal
预测反应	
应用	WB IF/ICC
推荐浓度	WB: 1:500 - 1:2000 IF/ICC: 1:50 - 1:100
理论分子量	25kDa
实测分子量	24-26kDa
形式	Liquid
保存条件	Store at -20°C. Avoid freeze / thaw cycles. Buffer: PBS with 0.01% thiomersal,50% glycerol,pH7.3.
偶联物	Unconjugated
阳性对照	Mouse heart,Mouse kidney,Mouse liver,Rat testis,Rat brain
细胞定位	Cytoplasm
纯化	Affinity purification

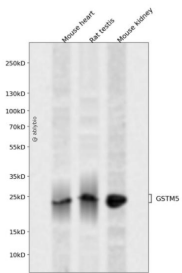
抗原信息

抗原信息	A synthetic peptide corresponding to a sequence within amino acids 100 to the C-terminus of human GST M5 (NP_000842.2).
序列	LENQVMDNHMELVRLCYDPDFEKLKPKYLEELPEKLYSEFLGKRPWFAGDKITFVDFLAYDVLDMKRIFEPKCLDAFLNLKDFISRFEGLLKISAYMKSSQFLRGLLFGKSATWNSK

靶点信息

研究背景	Cytosolic and membrane-bound forms of glutathione S-transferase are encoded by two distinct supergene families. At present, eight distinct classes of the soluble cytoplasmic mammalian glutathione S-transferases have been identified: alpha, kappa, mu, omega, pi, sigma, theta and zeta. This gene encodes a glutathione S-transferase that belongs to the mu class. The mu class of enzymes functions in the detoxification of electrophilic compounds, including carcinogens, therapeutic drugs, environmental toxins and products of oxidative stress, by conjugation with glutathione. The genes encoding the mu class of enzymes are organized in a gene cluster on chromosome 1p13.3 and are known to be highly polymorphic. These genetic variations can change an individual's susceptibility to carcinogens and toxins as well as affect the toxicity and efficacy of certain drugs. Diversification of these genes has occurred in regions encoding substrate-binding domains, as well as in tissue expression patterns, to accommodate an increasing number of foreign compounds.
基因ID	2949
基因名	GSTM5
Swiss	P46439
别名	GSTM5;GSTM5-5;GTM5

产品验证



Western blot analysis of GSTM5 expressed in Mouse heart,Rat testis,Mouse kidney using GSTM5 Rabbit pAb at 1:1000. Secondary antibody: HRP Goat Anti-Rabbit IgG (H+L) at 1:5000. Lysates/proteins: 30ug per lane. Blocking buffer: 5% non-fat dry milk in TBST. Detection: ECL Enhanced Kit. Exposure time: 120 S.

实验步骤

访问官网浏览详情: www.ablybio.cn