

PHKG1 Rabbit pAb

货号: **AYP18285**

产品信息

反应	Mouse
宿主	Rabbit
克隆性	Polyclonal
预测反应	
应用	WB
推荐浓度	WB: 1:500 - 1:2000
理论分子量	45kDa/48kDa
实测分子量	55kDa
形式	Liquid
保存条件	Store at -20°C. Avoid freeze / thaw cycles. Buffer: PBS with 0.01% thiomersal,50% glycerol,pH7.3.
偶联物	Unconjugated
阳性对照	Mouse kidney
细胞定位	cytosol,phosphorylase kinase complex
纯化	Affinity purification

抗原信息

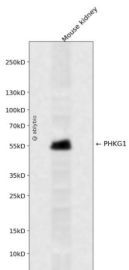
抗原信息	Recombinant fusion protein containing a sequence corresponding to amino acids 245-350 of human PHK G1 (NP_006204.1).
序列	GNYQFGSPEWDDYSDTVKDLVSRFLVQPNRYTAEALAHPPFFQYLVVEVRHFSRPGKFKVIALTVLASVRIYYQYRRV KPVTRIVIRDPYALRPLRRLIDAY

靶点信息

研究背景	This gene is a member of the Ser/Thr protein kinase family and encodes a protein with one protein kinase domain and two calmodulin-binding domains. This protein is the catalytic member of a 16 subunit protein kinase complex which contains equimolar ratios of 4 subunit types. The complex is a crucial glycogenolytic regulatory enzyme. This gene has two pseudogenes at chromosome 7q11.21 and one at chromosome 11p11.12. Multiple transcript variants encoding different isoforms have been found for this gene.
基因ID	5260

基因名	PHKG1
Swiss	Q16816
别名	PHKG1;PHKG

产品验证



Western blot analysis of PHKG1 expressed in Mouse kidney using PHKG1 Rabbit pAb at 1:1000. Secondary antibody: HRP Goat Anti-Rabbit IgG (H+L) at 1:5000. Lysates/proteins: 30ug per lane. Blocking buffer: 5% non-fat dry milk in TBST. Detection: ECL Enhanced Kit. Exposure time: 120s.

实验步骤

访问官网浏览详情: www.ablybio.cn