

PP2A-B56 α /PR61A/PPP2R5A Rabbit pAb

货号: **AYP18283**

产品信息

反应	Human,Mouse
宿主	Rabbit
克隆性	Polyclonal
预测反应	
应用	WB
推荐浓度	WB: 1:500 - 1:2000
理论分子量	50kDa/56kDa
实测分子量	56kDa
形式	Liquid
保存条件	Store at -20°C. Avoid freeze / thaw cycles. Buffer: PBS with 0.01% thiomersal,50% glycerol,pH7.3.
偶联物	Unconjugated
阳性对照	MCF7,U-87MG,LO2,HeLa
细胞定位	Chromosome,Cytoplasm,Nucleus,centromere
纯化	Affinity purification

抗原信息

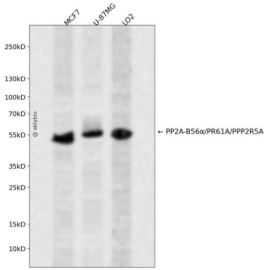
抗原信息	Recombinant fusion protein containing a sequence corresponding to amino acids 50-130 of human PP2A-B56 α /PR61A/PP2A-B56 α /PR61A/PPP2R5A (NP_006234.1).
序列	QAELHPLPQLKDATSNEQELFCQKLOQCCILDFDFMDSVSDLKSKEIKRATLNELVEYVSTNRGVIVESAYSDIVKMISAN

靶点信息

研究背景	The product of this gene belongs to the phosphatase 2A regulatory subunit B family. Protein phosphatase 2A is one of the four major Ser/Thr phosphatases, and it is implicated in the negative control of cell growth and division. It consists of a common heteromeric core enzyme, which is composed of a catalytic subunit and a constant regulatory subunit, that associates with a variety of regulatory subunits. The B regulatory subunit might modulate substrate selectivity and catalytic activity. This gene encodes an alpha isoform of the regulatory subunit B56 subfamily. Alternative transcript variants encoding distinct isoforms have been found for this gene.
------	---

基因ID	5525
基因名	PPP2R5A
Swiss	Q15172
别名	PPP2R5A;B56A;PR61A;B56alpha

产品验证



Western blot analysis of PP2A-B56 α /PR61A/PPP2R5A expressed in MCF7,U-87MG,LO2 using PP2A-B56 α /PR61A/PPP2R5A Rabbit pAb at 1:1000. Secondary antibody: HRP Goat Anti-Rabbit IgG (H+L) at 1:5000. Lysates/proteins: 30ug per lane. Blocking buffer: 5% non-fat dry milk in TBST. Detection: ECL Enhanced Kit. Exposure time: 120s.

实验步骤

访问官网浏览详情: www.ablybio.cn