

RIT1 Rabbit pAb

货号: **AYP18277**

产品信息

反应	Mouse,Rat
宿主	Rabbit
克隆性	Polyclonal
预测反应	
应用	WB
推荐浓度	WB: 1:500 - 1:2000
理论分子量	21kDa/25kDa/27kDa
实测分子量	30kDa
形式	Liquid
保存条件	Store at -20°C. Avoid freeze / thaw cycles. Buffer: PBS with 0.01% thiomersal,50% glycerol,pH7.3.
偶联物	Unconjugated
阳性对照	Mouse kidney,Rat kidney
细胞定位	Cell membrane
纯化	Affinity purification

抗原信息

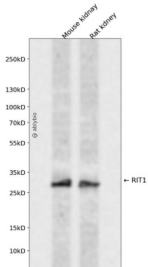
抗原信息	A synthetic peptide corresponding to a sequence within amino acids 100 to the C-terminus of human RIT1 (NP_001243749.1).
序列	SDLKQLRQVTKEEGLALAREFSCPFFETSAAARYYIDLVFHALVREIRRKEKEAVLAMEKKSFKNSVWKRLKSPFRKKKDSVT

靶点信息

研究背景	This gene encodes a member of a subfamily of Ras-related GTPases. The encoded protein is involved in regulating p38 MAPK-dependent signaling cascades related to cellular stress. This protein also cooperates with nerve growth factor to promote neuronal development and regeneration. Alternate splicing results in multiple transcript variants.
基因ID	6016

基因名	RIT1
Swiss	Q92963
别名	RIT1;NS8;RIBB;RIT;ROC1

产品验证



Western blot analysis of RIT1 expressed in Mouse kidney,Rat kidney using RIT1 Rabbit pAb at 1:1000. Secondary antibody: HRP Goat Anti-Rabbit IgG (H+L) at 1:5000. Lysates/proteins: 30ug per lane. Blocking buffer: 5% non-fat dry milk in TBST. Detection: ECL Enhanced Kit. Exposure time: 120s.

实验步骤

访问官网浏览详情: www.ablybio.cn