

RPL36A Rabbit pAb

货号: **AYP18275**

产品信息

反应	Human
宿主	Rabbit
克隆性	Polyclonal
预测反应	
应用	WB
推荐浓度	WB: 1:500 - 1:2000
理论分子量	12kDa
实测分子量	12kDa
形式	Liquid
保存条件	Store at -20°C. Avoid freeze / thaw cycles. Buffer: PBS with 0.01% thiomersal, 50% glycerol, pH7.3.
偶联物	Unconjugated
阳性对照	293T
细胞定位	Cytoplasm
纯化	Affinity purification

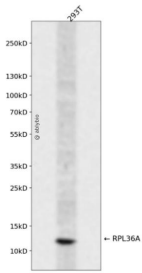
抗原信息

抗原信息	Recombinant fusion protein containing a sequence corresponding to amino acids 37-142 of human RPL36 A (NP_066357.2).
序列	MVNVPKTRRTFCKKCGKHQPHKVTQYKKGKDSLQAQGKRRYDRKQSGYGGQTKPIFRKKAKTTKKIVLRLECVENCRSK RMLAIKRCKHFELGGDKRKGQVIQF

靶点信息

研究背景	Cytoplasmic ribosomes, organelles that catalyze protein synthesis, consist of a small 40S subunit and a large 60S subunit. Together these subunits are composed of 4 RNA species and approximately 80 structurally distinct proteins. This gene encodes a ribosomal protein that is a component of the 60S subunit. The protein, which shares sequence similarity with yeast ribosomal protein L44, belongs to the L44E (L36AE) family of ribosomal proteins. Although this gene has been referred to as ribosomal protein L44 (RPL44), its official name is ribosomal protein L36a (RPL36A). This gene and the human gene officially named ribosomal protein L36a-like (RPL36AL) encode nearly identical proteins; however, they are distinct genes. As is typical for genes encoding ribosomal proteins, there are multiple processed pseudogenes of this gene dispersed through the genome. Naturally occurring read-through transcription occurs between this locus and the heterogeneous nuclear ribonucleoprotein H2 (H') gene.
基因ID	6173
基因名	RPL36A
Swiss	P83881
别名	RPL36A;L36A;L44L;MIG6;RPL44

产品验证



Western blot analysis of RPL36A expressed in 293T using RPL36A Rabbit pAb at 1:1000. Secondary antibody: HRP Goat Anti-Rabbit IgG (H+L) at 1:5000. Lysates/proteins: 30ug per lane. Blocking buffer: 5% non-fat dry milk in TBST. Detection: ECL Enhanced Kit. Exposure time: 120s.

实验步骤

访问官网浏览详情: www.ablybio.cn