

PSMC1 Rabbit pAb

货号: **AYP18274**

产品信息

反应	Human,Mouse,Rat
宿主	Rabbit
克隆性	Polyclonal
预测反应	
应用	WB IHC
推荐浓度	WB: 1:500 - 1:2000 IHC: 1:100 - 1:200
理论分子量	41kDa/49kDa
实测分子量	58kDa
形式	Liquid
保存条件	Store at -20°C. Avoid freeze / thaw cycles. Buffer: PBS with 0.01% thiomersal,50% glycerol,pH7.3.
偶联物	Unconjugated
阳性对照	A-549,DU145,Jurkat,HeLa,Mouse brain,Mouse heart,Mouse kidney,Rat liver
细胞定位	Cytoplasm,Lipid-anchor,Membrane,Nucleus
纯化	Affinity purification

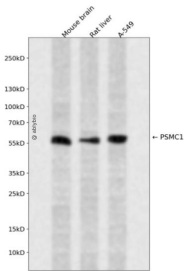
抗原信息

抗原信息	Recombinant fusion protein containing a sequence corresponding to amino acids 77-440 of human PSMC 1 (NP_002793.2).
序列	EFIRNQEQMKNPLEEKQEEERSKVDDLRLGTPMSVGTLEEIIDDNHAVSTSVGSEHYVSILSFVDKDLLEPGCSVLLNHKVHA VIGVLMDDTDPLVTVMKVEKAPQETYADIGGLDNQIQEIKESVELPLTHPEYYEEMGIKPPKGVILYGPPGTGKTLAKAVAN QTSATFLRVVGSSELIQKYLGDGPKLVRELFRAEEHAPSIVFIDEIDAIGTKRYDSNNGGEREIQRTMLELLNQLDGFDSRG DVKVIMATNRIETLDPALIRPGRIDRKIEFPLPDEKTKKRIFQHTSRMTLADDVTLDDLIMAKDDLKADIKAICTEAGLMAL RERRMKVTNEDFKKSKENVLYKKQEGTPEGLYL

靶点信息

研究背景	The 26S proteasome is a multicatalytic proteinase complex with a highly ordered structure composed of 2 complexes, a 20S core and a 19S regulator. The 20S core is composed of 4 rings of 28 non-identical subunits; 2 rings are composed of 7 alpha subunits and 2 rings are composed of 7 beta subunits. The 19S regulator is composed of a base, which contains 6 ATPase subunits and 2 non-ATPase subunits, and a lid, which contains up to 10 non-ATPase subunits. Proteasomes are distributed throughout eukaryotic cells at a high concentration and cleave peptides in an ATP/ubiquitin-dependent process in a non-lysosomal pathway. An essential function of a modified proteasome, the immunoproteasome, is the processing of class I MHC peptides. This gene encodes one of the ATPase subunits, a member of the triple-A family of ATPases which have a chaperone-like activity. This subunit and a 20S core alpha subunit interact specifically with the hepatitis B virus X protein, a protein critical to viral replication. This subunit also interacts with the adenovirus E1A protein and this interaction alters the activity of the proteasome. Finally, this subunit interacts with ataxin-7, suggesting a role for the proteasome in the development of spinocerebellar ataxia type 7, a progressive neurodegenerative disorder.
基因ID	5700
基因名	PSMC1
Swiss	P62191
别名	PSMC1;P26S4;S4;p56;ATPase 1

产品验证



Western blot analysis of PSMC1 expressed in Mouse brain, Rat liver, A-549 using PSMC1 Rabbit pAb at 1:1000. Secondary antibody: HRP Goat Anti-Rabbit IgG (H+L) at 1:5000. Lysates/proteins: 30ug per lane. Blocking buffer: 5% non-fat dry milk in TBST. Detection: ECL Enhanced Kit. Exposure time: 120s.

实验步骤

访问官网浏览详情: www.ablybio.cn