

RLN1 Rabbit pAb

货号: **AYP18273**

产品信息

反应	Human
宿主	Rabbit
克隆性	Polyclonal
预测反应	
应用	WB
推荐浓度	WB: 1:500 - 1:2000
理论分子量	13kDa/21kDa
实测分子量	20kDa
形式	Liquid
保存条件	Store at -20°C. Avoid freeze / thaw cycles. Buffer: PBS with 0.01% thiomersal,50% glycerol,pH7.3.
偶联物	Unconjugated
阳性对照	22Rv1
细胞定位	Secreted
纯化	Affinity purification

抗原信息

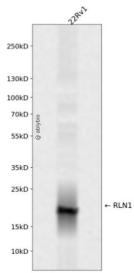
抗原信息	A synthetic peptide corresponding to a sequence within amino acids 1-100 of human RLN1 (NP_008842.1).
序列	MPRLFLFHLLLEFCLLLNQFSRAVAAKWKDDVIKLCGRELVRAQIAICGMSTWSKRSLSQEDAPQTTPRPVAEIVPSFINKDTE TIIIMLEFIANLPPELKA

靶点信息

研究背景	Relaxins are known endocrine and autocrine/paracrine hormones, belonging to the insulin gene superfamily. In humans there are three non-allelic relaxin genes, RLN1, RLN2 and RLN3, where RLN1 and RLN2 share high sequence homology. The protein encoded by this gene is synthesized as a single-chain polypeptide but the active form consists of an A chain and a B chain linked by disulfide bonds. Relaxin is produced by the ovary, and targets the mammalian reproductive system to ripen the cervix, elongate the pubic symphysis and inhibit uterine contraction. It may have additional roles in enhancing sperm motility, regulating blood pressure, controlling heart rate and releasing oxytocin and vasopressin.
------	--

基因ID	6013
基因名	RLN1
Swiss	P04808
别名	RLN1;H1;H1RLX;RLXH1;bA12D24.3.1;bA12D24.3.2;relaxin 1

产品验证



Western blot analysis of RLN1 expressed in 22Rv1 using RLN1 Rabbit pAb at 1:1000. Secondary antibody: HRP Goat Anti-Rabbit IgG (H+L) at 1:5000. Lysates/proteins: 30ug per lane. Blocking buffer: 5% non-fat dry milk in TBST. Detection: ECL Enhanced Kit. Exposure time: 120s.

实验步骤

访问官网浏览详情: www.ablybio.cn