

CPNE1 Rabbit pAb

货号: **AYP18253**

产品信息

反应	Mouse,Rat
宿主	Rabbit
克隆性	Polyclonal
预测反应	
应用	WB
推荐浓度	WB: 1:500 - 1:2000
理论分子量	59kDa
实测分子量	65kDa
形式	Liquid
保存条件	Store at -20°C. Avoid freeze / thaw cycles. Buffer: PBS with 0.01% thiomersal,50% glycerol,pH7.3.
偶联物	Unconjugated
阳性对照	Mouse brain,Mouse heart,Rat liver
细胞定位	Cell membrane,Cytoplasm,Nucleus
纯化	Affinity purification

抗原信息

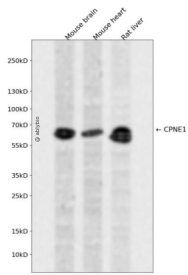
抗原信息	Recombinant fusion protein containing a sequence corresponding to amino acids 120-220 of human CPNE 1 (NP_003906.2).
序列	MLKPGKPAGRGTTITVSAQELKDNRVVTMEVEARNLDKKDFLGKSDPFLEFFRQGDGKWHLVYRSEVIKNNLNPTWKRFS VPVQHFCGGNPSTPIQVQCSDY

靶点信息

研究背景	Calcium-dependent membrane-binding proteins may regulate molecular events at the interface of the cell membrane and cytoplasm. This gene encodes a calcium-dependent protein that also contains two N-terminal type II C2 domains and an integrin A domain-like sequence in the C-terminus. However, the encoded protein does not contain a predicted signal sequence or transmembrane domains. This protein has a broad tissue distribution and it may function in membrane trafficking. This gene and the gene for RNA binding motif protein 12 overlap at map location 20q11.21. Alternate splicing results in multiple transcript variants encoding different proteins.
------	---

基因ID	8904
基因名	CPNE1
Swiss	Q99829
别名	CPNE1;COPN1;CPN1;copine-1

产品验证



Western blot analysis of CPNE1 expressed in Mouse brain, Mouse heart, Rat liver using CPNE1 Rabbit pAb at 1:1000. Secondary antibody: HRP Goat Anti-Rabbit IgG (H+L) at 1:5000. Lysates/proteins: 30ug per lane. Blocking buffer: 5% non-fat dry milk in TBST. Detection: ECL Enhanced Kit. Exposure time: 120s.

实验步骤

访问官网浏览详情: www.ablybio.cn