

NFE2L3 Rabbit pAb

货号: **AYP18246**

产品信息

反应	Human,Mouse,Rat
宿主	Rabbit
克隆性	Polyclonal
预测反应	
应用	WB
推荐浓度	WB: 1:500 - 1:1000
理论分子量	76kDa
实测分子量	76KDa
形式	Liquid
保存条件	Store at -20°C. Avoid freeze / thaw cycles. Buffer: PBS with 0.01% thiomersal,50% glycerol,pH7.3.
偶联物	Unconjugated
阳性对照	HeLa,RAW264.7
细胞定位	Nucleus
纯化	Affinity purification

抗原信息

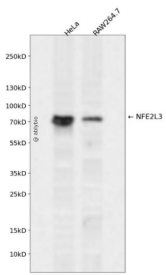
抗原信息	Recombinant fusion protein containing a sequence corresponding to amino acids 300-550 of human NFE2L3 (NP_004280.5).
序列	HYHVNFSQAISQDVNLHEAILLCPNNTFRRDPTARTSQSQEPFLQLNSHTTNPEQTLPGTNLTGFLSPVDNHRNLTSQLDLYDLINIFDEINLMSLATEDNFDPIDVSQLFDEPDSDSGLSLDSSHNNNTSVIKSNSSHVCDEGAIGYCTDHESSSHHDLE GAVGGYYPEPSKLCHLDQSDSDFHGDLTQHVFNHTYHLQPTAPESTSEFPWPWGKSQKIRSRYLEDTDRNLSRDEQR AKALHIPFS

靶点信息

研究背景	This gene encodes a member of the cap 'n' collar basic-region leucine zipper family of transcription factors. The encoded protein heterodimerizes with small musculoaponeurotic fibrosarcoma factors to bind antioxidant response elements in target genes. This protein is a membrane bound glycoprotein that is targeted to the endoplasmic reticulum and the nuclear envelope. Pseudogenes of this gene are found on chromosomes 16, 17, and 18.
------	---

基因ID	9603
基因名	NFE2L3
Swiss	Q9Y4A8
别名	NFE2L3;NRF3

产品验证



Western blot analysis of NFE2L3 expressed in HeLa,RAW264.7 using NFE2L3 Rabbit pAb at 1:1000. Secondary antibody: HRP Goat Anti-Rabbit IgG (H+L) at 1:5000. Lysates/proteins: 30ug per lane. Blocking buffer: 5% non-fat dry milk in TBST. Detection: ECL Enhanced Kit. Exposure time: 120s.

实验步骤

访问官网浏览详情: www.ablybio.cn