

# GOLGA5 Rabbit pAb

货号: **AYP18242**

## 产品信息

反应	Human,Mouse,Rat
宿主	Rabbit
克隆性	Polyclonal
预测反应	
应用	WB IF/ICC
推荐浓度	<b>WB:</b> 1:500 - 1:2000 <b>IF/ICC:</b> 1:50 - 1:200
理论分子量	78kDa/83kDa
实测分子量	100kDa,115kDa
形式	Liquid
保存条件	Store at -20°C. Avoid freeze / thaw cycles. Buffer: PBS with 0.01% thiomersal,50% glycerol,pH7.3.
偶联物	Unconjugated
阳性对照	LO2,Jurkat,HeLa,Mouse brain,Mouse heart,Mouse kidney,Mouse liver,Rat testis
细胞定位	Golgi apparatus membrane,Single-pass type IV membrane protein
纯化	Affinity purification

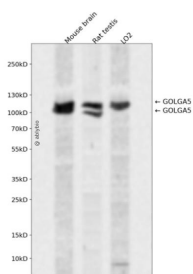
## 抗原信息

抗原信息	Recombinant fusion protein containing a sequence corresponding to amino acids 1-300 of human GOLGA 5 (NP_005104.3).
序列	MSWFVDLAGKAEDLLNRVDQGAATALSRKDNASNIYSKNTDYELHQNTDLIYQTGPKSTYISSAADNIRNPKATILAGT ANVKVGSRTPEASHPVENASVPRPSSHVRRKKSEPDELLDFLNSSQKEPTGRVEIRKEKGKTPVFQSSQTSSVSSV NPSVTTIKTIEENSFGSQTHEAASNSDSSHEGQEESKENVSSNAACPDHTPTPNDDGKSHLSNLRLLENQLLRNEVQSL NQEMASLLQRSKETQEELNKARARVEKWNADHSKSDRMTRGLRAQVDDLTEAVALAKDSQ

## 靶点信息

研究背景	The Golgi apparatus, which participates in glycosylation and transport of proteins and lipids in the secretory pathway, consists of a series of stacked cisternae (flattened membrane sacs). Interactions between the Golgi and microtubules are thought to be important for the reorganization of the Golgi after it fragments during mitosis. This gene encodes one of the golgins, a family of proteins localized to the Golgi. This protein is a coiled-coil membrane protein that has been postulated to play a role in vesicle tethering and docking. Translocations involving this gene and the ret proto-oncogene have been found in tumor tissues; the chimeric sequences have been designated RET-II and PTC5. A pseudogene of this gene is located on the short arm of chromosome 5.
基因ID	9950
基因名	GOLGA5
Swiss	Q8TBA6
别名	GOLGA5;GOLIM5;RFG5;ret-II;golgin A5

## 产品验证



Western blot analysis of GOLGA5 expressed in Mouse brain,Rat testis,LO2 using GOLGA5 Rabbit pAb at 1:1000. Secondary antibody: HRP Goat Anti-Rabbit IgG (H+L) at 1:5000. Lysates/proteins: 30ug per lane. Blocking buffer: 5% non-fat dry milk in TBST. Detection: ECL Enhanced Kit. Exposure time: 120s.

## 实验步骤

访问官网浏览详情: [www.ablybio.cn](http://www.ablybio.cn)